



SKINNER

Fine Wines – Online

with Lower Falls Wine Company



CLARENDON HILLS
CABERNET SAUVIGNON

CLARENDON
CABERNET
CLARENDON
Hickinbotham
14.5% VOL WINE O

CLARENDON
CABERNET
CLARENDON
Hickinbotham
14.5% VOL WINE O

CLARENDON
CABERNET
CLARENDON
Hickinbotham
14.5% VOL WINE O

CONTENTS 750ML
PRODUCT OF AUSTRALIA
IMPORTED BY: HART DISTRI
WARNING: (1) ACCO
NOT DRINK ALCOHO
RISK OF BIRTH
BEVERAGES IMPAIRS
MACHINERY, AND MAY CA

CONTENTS 750ML
PRODUCT OF AUSTRALIA
IMPORTED BY: HART DISTRI
WARNING: (1) ACCO
NOT DRINK ALCOHO
RISK OF BIRTH
BEVERAGES IMPAIRS
MACHINERY, AND MAY CA

CONTENTS 750ML
PRODUCT OF AUSTRALIA
IMPORTED BY: HART DISTRI
WARNING: (1) ACCO
NOT DRINK ALCOHO
RISK OF BIRTH
BEVERAGES IMPAIRS
MACHINERY, AND MAY CA

Specialists



Marie Keep
Department Director
508.970.3296



Michael J. Moser
508.970.3133



2366 Washington Street
Newton Lower Falls, MA
Phil Minervino
Chris Minervino
Owners

Auction Information

Auction 2784T

Monday, March 2,
12PM–Wednesday,
March 11, 4PM

www.skinnerinc.com

Preview

To arrange preview, please
contact the department at
508.970.3296 or e-mail
finewines@skinnerinc.com

Absentee Bidding

T: 617.874.4318
F: 617.350.5429

General Inquiries

617.350.5400

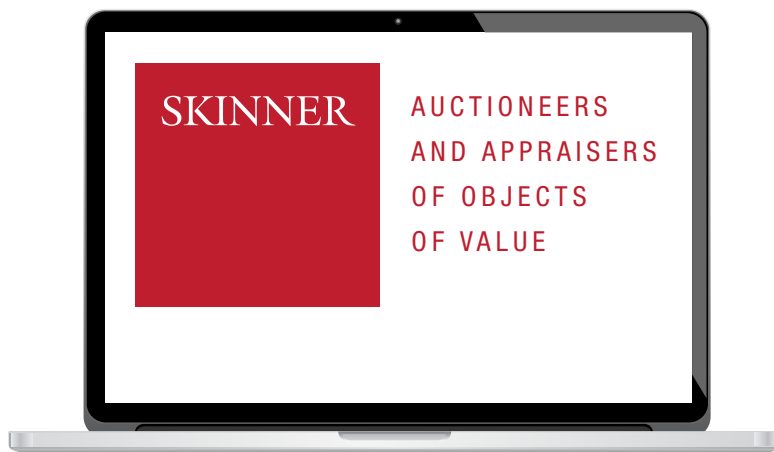
SkinnerLive!

skinnerinc.com

COVER: 1263; FRONTISPIECE: 1173

INTERIOR BACK COVER: 1150; BACK COVER: 1169

Timed Online Auctions: How to Bid



Skinner timed online auctions are available only through our website, look for the red stopwatch symbol. A buyer's premium of 23% applies to timed online auction purchases. Please read the Conditions of Sale for more information. To bid on the lots presented in a timed online auction, you will need to take the following steps:

Step 1: Register on the Skinner Website

Registration is free, and once completed will enable access to bidding and watching lots.

Step 2: Login

Use the "Login Reminder" link to retrieve a forgotten password.

Step 3: Browse or Search the Online Catalog

View lot listings, bid on and watch lots, or send an inquiry to the Fine Wines department. Use the search box to search by keyword or "GO" to a specific lot number.

Step 4: Bid

Bids are accepted online through the ending date and time displayed on each lot. View the "My Activity" tabs to view your watched lots, bids, and more.

Step 5: Sold!

The winning bidder is the current high bidder when bidding closes, and will be notified at the conclusion of the auction by email. All lots are subject to the Skinner Conditions of Sale. For post auction services visit <http://www.skinnerinc.com/services/payment-and-shipping/>

For More Information: visit http://bit.ly/2784TWine_Online

For Customer Service, Please Contact:

- online@skinnerinc.com
- +1 508.970.3279

You may also access the catalog by scanning this QR code with your mobile device:



Table of Contents

1	Auction & Specialist Information
2	How to Bid
4	Lot Sequence
5	Lots 1001–1337
24	Glossary of Terms
25	Collection of Wines
27	Conditions of Sale
28	Company Directors & Specialty Departments
29	Administrative Staff & Client Services
31	Subscription Form

Please Note: All lots sold subject to our Conditions of Sale.

Please refer to page 27 of this catalog for the full terms and conditions governing your purchase.

Copyright © Skinner, Inc. 2015
All rights reserved

MA/Lic. #2304

Lot Sequence:

(each sub-region alphabetically by producer)

Champagne	1001
Bordeaux	
<i>First Growth</i>	1004
<i>Second Growth</i>	1024
<i>Third Growth</i>	1049
<i>Fourth Growth</i>	1053
<i>Fifth Growth</i>	1056
<i>Other Left Bank</i>	1063
<i>Right Bank</i>	1083
<i>Mixed Bordeaux</i>	1099
<i>Sauternes</i>	1105
Burgundy	1112
Rhone	
<i>Northern Rhone</i>	1129
<i>Southern Rhone</i>	1134
Italy	
<i>Piedmont</i>	1139
<i>Tuscany</i>	1143
<i>Other Italian</i>	1156
Spain.....	1162
Other Europe.....	1165
Portugal.....	1167
Australia	1173
California	1194
Washington	1316
Argentina.....	1321
Mixed Lots	1325

Please Note:

Quotes cited as R. Parker used by permission of Robert Parker.

Quotes cited as Burghound used by permission of Allen Meadows.

Quotes cited as *Wine Spectator* used by permission of *Wine Spectator*.

Tasting notes attributed to PhM are Phil Minervino, those to CM are Chris Minervino, those to MM are Michael Moser, and those to MK are Marie Keep.

Champagne

1001

Moët & Chandon Brut Imperial 1975
Epemay
1 bottle
\$100-150

1002

Perrier-Jouët Fleur de Champagne 1983
Epemay
Gift set with 4 champagne glasses
1 magnum
\$300-450

1003

Taittinger Brut Collection Roy Lichtenstein 1985
Reims
original gift box
1 bottle
\$175-275

Bordeaux

1004

Chateau Haut Brion 1970
Pessac-Leognan, 1er Cru Classe
u: four 3.5cm, three 4.0cm, three 4.5cm, two 5.0cm, signs of old seepage, six lightly corroded capsules, one nicked label, very lightly bin-soiled labels
12 bottles (owc)
Provenance: The Doctor's Collection.
\$1,600-2,400

1005

Chateau Haut Brion 1978
1er Cru Classe, Pessac-Leognan
1 bottle
\$150-225

1006

Chateau Haut Brion 1994
Pessac-Leognan, 1er Cru Classe
1 bottle
\$200-300

1007

Chateau Haut Brion 1997
Pessac-Leognan, 1er Cru Classe
1 bottle
\$200-300

1008

Chateau Lafite Rothschild 1976
Pauillac, 1er Cru Classe
u: bottom neck, bin-soiled label
1 bottle
\$250-375

1009

Chateau Lafite Rothschild 1978
Pauillac, 1er Cru Classe
u: top shoulder, scuffed capsule, lightly bin-soiled labels
1 bottle
\$300-450

1010

Chateau Lafite Rothschild 1979
Pauillac, 1er Cru Classe
u: very top shoulder, faded label, tissue adhered to label, lightly bin-soiled label
1 bottle
\$250-400

1011

Chateau Lafite Rothschild 1979
Pauillac, 1er Cru Classe
u: into neck, damp-stained label
1 bottle
\$250-400

1012

Chateau Lafite Rothschild Vertical 1981 (1 bt) u: into neck, very lightly bin-soiled label
1983 (1 bt) u: very top shoulder, corroded capsule, lightly bin-soiled label
1995 (1 bt) u: into neck, lightly bin-soiled label
Pauillac, 1er Cru Classe
3 bottles
\$1,200-1,800

1013

Chateau Latour 1989
Pauillac, 1er Cru Classe
1 bottle
\$300-450

1014

Chateau Latour 1997
Pauillac, 1er Cru Classe
1 bottle
\$300-450

1015

Chateau Latour Vertical 1981 (1 bt) u: very top shoulder, glue-striped and bin-soiled label
1995 (1 bt) u: bottom neck, lightly bin-soiled label
Pauillac, 1er Cru Classe
2 bottles
\$600-900

1016

Chateau Margaux 1983
Margaux, 1er Cru Classe
u: very top shoulder, corroded capsules, bin-soiled labels
R. Parker for TWA, 96 pts. 01/03
2 bottles
\$700-1,000

1017

Chateau Margaux 1986
Margaux, 1er Cru Classe
u: bottom neck, one slightly depressed cork, lightly bin-soiled labels
"A magnificent example of Chateau Margaux and one of the most tannic, backward Margauxs of the last 50 years, the 1986 continues to evolve at a glacial pace. The color is still a dense ruby/purple with just a hint of lightening at the rim. With several hours of aeration, the aromatics become striking, with notes of smoke, toast, creme de cassis, mineral, and white flowers. Very full-bodied, with high but sweet tannin, great purity, and a very masculine, full-bodied style, this wine should prove nearly immortal in terms of its aging potential. It is beginning to budge from its infantile stage and approach adolescence. Anticipated maturity: 2008-2050." R. Parker for TWA, 98 pts. 01/03
3 bottles
\$1,000-1,500

1018

Chateau Margaux 1989
Margaux, 1er Cru Classe
1 bottle
\$275-375

1019

Chateau Margaux 1996
Margaux, 1er Cru Classe
1 bottle
\$400-600

1020

Chateau Margaux Vertical 1966 (1 demi) u: high shoulder, slightly depressed cork, bin-soiled label
1966 (1 bt) u: top shoulder, lightly glue-striped label, pencil writing on label
1970 (1 bt) u: top shoulder, signs of old seepage, lightly corroded capsule, glue-striped and bin-soiled label
1983 (1 bt) u: bottom neck, wine-stained label
1986 (1 bt) u: bottom neck, lightly corroded capsule, lightly damp-stained label
1988 (1 bt) u: into neck, lightly bin-soiled label
Margaux, 1er Cru Classe
1 demi bottle
5 bottles
Provenance: The Doctor's Collection.
\$1,200-1,800

1021

Chateau Mouton Rothschild 1973
Pauillac, 1er Cru Classe
u: one top shoulder, one high-mid shoulder, lightly glue-stripped and bin-soiled labels
 2 bottles
\$200-300

1022

Chateau Mouton Rothschild 1986
Pauillac, 1er Cru Classe
u: bottom neck
 "Deep garnet-black colour. An incredible array of aromas on the nose: blackberry, black cherry, tobacco, espresso, leather, black olive and loam. The palate is absolutely seamless from first impression to finish, effortlessly building layers of complexity in the mouth and leading to a very long, earth and spice finish. I can't see how this could possibly be improvement so have no alternative but concede perfection. Drink now to 2045+." L. Perrotti-Brown for TWA, 100 pts.
 05/09
 1 bottle
\$600-900

1023

Chateau Mouton Rothschild Vertical 1979 (1 bt) u: top shoulder, lightly corroded capsule, damp-stained, wrinkled and lightly bin-soiled label loose at edge
1980 (1 bt) u: top shoulder, worn capsule, bin-soiled label
1981 (1 bt) u: bottom neck, nicked capsule, lightly bin-soiled label
1983 (1 bt) u: very top shoulder, nicked capsule, bin-soiled label
1985 (1 bt) u: very top shoulder, bin-soiled and loose label
1987 (1 bt) u: top shoulder, nicked capsule, lightly bin-soiled label
1995 (1 bt) u: bottom neck, nicked capsule
Pauillac, 1er Cru Classe
 7 bottles
\$1,500-2,000

1024

Chateau Cos d'Estournel 1982
St. Estephe, 2eme Cru Classe
u: into neck, glue-stripped, stained, wrinkled and bin-soiled label loose at edge
 R. Parker for TWA, 95 pts. 06/09
 1 magnum
\$600-900

1025

Chateau Cos d'Estournel 1986
St. Julien, 2eme Cru Classe
u: into neck, two bottom neck, three very top shoulder, one with signs of old seepage, nicked capsules, lightly bin-soiled labels
 6 bottles
\$600-900

1026

Chateau Cos d'Estournel 1986
St. Estephe, 2eme Cru Classe
u: very top shoulder, stained and bin-soiled label
 1 bottle
\$125-200

1027

Chateau Cos d'Estournel 2000
St. Estephe, 2eme Cru Classe
 2 bottles
\$200-300

1028

Chateau Gruaud Larose 1982
St. Julien, 2eme Cru Classe
u: two bottom neck, two very top shoulder, nicked and oxidized capsules, bin-soiled labels
 "A massive wine that is clearly of first-growth quality in this vintage, the 1982 Gruaud Larose remains a youngster. A broodingly dense, thick, unctuously textured, inky/plum/garnet/purple color offers up scents of beef blood, steak tartare, cassis, herbs, tobacco, and underbrush. One of the most concentrated wines of the vintage (as well as one of the most concentrated Bordeaux's I have ever tasted), it is a huge, full-bodied, weighty, rich wine whose tannins are getting silkier and silkier. It appears set for another 30-40 years of life. This behemoth is a singularly profound example of Gruaud Larose that continues to justify its legendary status. Anticipated maturity: now-2050." R. Parker for TWA, 98 pts.
 06/09
 4 bottles
\$1,000-1,600

1029

Chateau Gruaud Larose 1990
St. Julien, 2eme Cru Classe
u: into neck, lightly scuffed labels
 2 bottles
\$200-300

1030

Chateau Gruaud Larose 1996
St. Julien, 2eme Cru Classe
 6 bottles
\$425-600

1031

Chateau Lascombes 1976
Margaux, 2eme Cru Classe
u: very top shoulder, lightly corroded capsule, nicked capsule, bin-soiled label
 1 magnum
\$40-60

1032

Chateau Leoville Barton 2005
St. Julien, 2eme Cru Classe
 4 bottles
\$300-400

1033

Chateau Leoville Las Cases 1982
St. Estephe, 2eme Cru Classe
u: one bottom neck, one very top shoulder, one corroded capsule with signs of old seepage, lightly bin-soiled labels
 3 bottles
\$900-1,200

1034

Chateau Leoville Las Cases 1989
St. Julien, 2eme Cru Classe
 1 bottle
\$100-150

1035

Chateau Leoville Las Cases 1998
St. Julien, 2eme Cru Classe
 6 bottles
\$550-800

1036

Chateau Leoville Las Cases Vertical 1975 (1 bt) u: very top shoulder, lightly corroded capsule, bin-soiled label
1978 (2 bts) u: one very top shoulder, one top shoulder, lightly corroded capsules, signs of old seepage, lightly bin-soiled label
1981 (1 bt) u: very top shoulder, lightly bin-soiled label
St. Julien, 2eme Cru Classe
 4 bottles
\$250-400

1037

Chateau Leoville Poyferre 2000
St. Julien, 2eme Cru Classe
 2 bottles
\$200-300

1038

Chateau Leoville Poyferre 2005
St. Julien, 2eme Cru Classe
 4 bottles
\$200-300

1039
Mixed Leovilles
Chateau Leoville Barton 1995 (2 bts)
Chateau Leoville Las Cases 1995
(1 bt)
St. Julien, 2eme Cru Classe
 3 bottles
\$250-350

1040
Chateau Montrose 1982
St. Estephe, 2eme Cru Classe
u: into neck, nicked capsule, bin-soiled label
 1 bottle
\$150-225

1041
Chateau Montrose 1994
St. Estephe, 2eme Cru Classe
 6 bottles
\$350-550

1042
Chateau Montrose 2000
St. Estephe, 2eme Cru Classe
 2 bottles
\$200-300

1043
Chateau Pichon Longueville Baron 1990
Pauillac, 2eme Cru Classe
u: bottom neck, bin-soiled label
R. Parker for TWA, 97 pts. 06/09
 2 bottles
\$400-600

1044
Chateau Pichon Longueville Baron 1979 (1 bt) u: top shoulder, worn capsule, faded and bin-soiled label loose at edge
1981 (1 bt) u: very top shoulder, wrinkled, faded and bin-soiled label
1983 (2 bts) u: bottom neck, corroded capsules, signs of old seepage, heavily bin-soiled labels
Pauillac, 2eme Cru Classe
 4 bottles
\$200-300

1045
Chateau Pichon Longueville Baron Vertical 1994 (4 bts) 2000 (2 bts)
Pauillac, 2eme Cru Classe
 6 bottles
\$500-700

1046
Chateau Pichon Longueville Lalande Vertical 1979 (1 bt) u: very top shoulder, lightly bin-soiled label
1981 (1 bt) u: top shoulder, lightly bin-soiled label
1983 (2 bts) u: one bottom neck, one very top shoulder, worn capsules, lightly bin-soiled labels
1984 (3 bts) u: two bottom neck, one very top shoulder, lightly bin-soiled labels
1985 (1 bt) u: bottom neck, bin-soiled label
Pauillac, 2eme Cru Classe
 8 bottles
\$600-900

1047
Chateau Rauzan Gassies 1982
Margaux, 2eme Cru Classe
u: six very top shoulder, two top shoulder, lightly bin-soiled labels
 8 bottles
\$150-250

1048
Chateau Rausan Segla 2005
Margaux, 2eme Cru Classe
 4 bottles
\$250-350

1049
Chateau Cantenac Brown 2009
Margaux, 3eme Cru Classe
 2 magnums
\$125-175

1050
Chateau Giscours 1998
Margaux, 3eme Cru Classe
 3 bottles
\$80-125

1051
Chateau Palmer 1989
Margaux, 3eme Cru Classe
u: into neck, lightly bin-soiled labels
L. Perrotti-Brown for TWA, 96 pts. 03/10
 2 bottles
\$400-600

1052
Chateau Palmer 2000
Margaux, 3eme Cru Classe
 2 bottles
\$400-600

1053
Chateau Duhart Milon 2000
Pauillac, 4eme Cru Classe
 6 bottles
\$350-550

1054
Chateau Saint Pierre 2009
St. Julien, 4eme Cru Classe
R. Parker for TWA, 98 pts. 02/12
 2 magnums
\$250-350

1055
Chateau Talbot Vertical 1980 (1 bt) u: very top shoulder, bin-soiled label
1981 (1 bt) u: very top shoulder, bin-soiled label
1982 (3 bts) u: one bottom neck, two very top shoulder, one lightly corroded capsule, bin-soiled labels
St. Julien, 4eme Cru Classe
 5 bottles
\$450-600

1056
Chateau Cantemerle 1996
Haut Medoc, 5eme Cru Classe
 12 bottles
\$400-600

1057
Chateau Clerc Milon 1986
Pauillac, 5eme Cru Classe
u: eight bottom neck, four very top shoulder, seven with signs of old seepage, one torn capsule
 12 bottles (owc)
Provenance: The Doctor's Collection.
\$650-950

1058
Chateau Grand Puy Lacoste 1999
Pauillac, 5eme Cru Classe
 3 bottles
\$125-175

1059
Chateau Lynch Bages 1975
Pauillac, 5eme Cru Classe
u: very top shoulder, signs of old seepage, bin-soiled label
 1 magnum
\$150-225

1060
Chateau Lynch Bages 1982
Pauillac, 5eme Cru Classe
u: one bottom neck, one very top shoulder, one top shoulder, one with signs of old seepage, lightly bin-soiled labels
 3 bottles
\$600-800

1061
Chateau Lynch Bages Vertical
1989 (1 bt) u: into neck, bin-soiled
label
Pauillac, 5eme Cru Classe
 4 bottles
\$400-600

1062
Chateau Pontet Canet 2005
Pauillac, 5eme Cru Classe
 4 bottles
\$350-500

1063
Blason d'Issan 1998
Margaux
 7 bottles
\$150-200

1064
Carruades de Lafite Rothschild 1997
Pauillac
writing on label
 1 bottle
\$100-150

1065
Carruades de Lafite Rothschild 1999
Pauillac
 1 magnum
\$275-400

1066
Carruades de Lafite Rothschild 2000
Pauillac
 3 bottles
\$500-750

1067
Carruades de Lafite Rothschild 2000
Pauillac
 1 magnum
\$325-500

1068
La Reserve du General 1986
Margaux
 12 bottles (owc)
\$350-500

1069
Les Forts de Latour 1990
Pauillac
u: one into neck, one bottom neck
 2 bottles
\$200-300

1070
Chateau d'Angludet 1979
Margaux
 11 bottles
\$225-325

1071
Chateau Beaumont 1998
Haut Medoc
 10 bottles
\$175-250

1072
Chateau Chasse Spleen Vertical
1983 (2 bts) u: one bottom neck, one
very top shoulder, nicked capsules,
one bin-soiled label, one heavily bin-
soiled label
1985 (2 bts) u: one bottom neck, one
very top shoulder, heavily bin-soiled
labels
1986 (1 bt) u: very top shoulder,
wrinkled and bin-soiled label
Moulis-En-Medoc
 5 bottles
\$100-150

1073
Chateau Haut Bailly 2009
Pessac-Leognan
 R. Parker for TWA, 98+ pts. 02/12
 2 magnums
\$200-300

1074
Chateau La Tour Haut Brion 1982
Pessac-Leognan
u: one bottom neck, one very top
shoulder, lightly bin-soiled labels
 "Today, the fruit from this vineyard has been incorporated into the second wine of La Mission-Haut-Brion, so I hope readers do not forget how great many vintages of La Tour-Haut-Brion were. The superb 1982 ranks alongside their great 1949, 1955, 1959, 1961, and 1975. No wine since this 1982 ever achieved this level of quality. Its inky/purple hue is followed by classic aromas of scorched earth, plums, cassis, charcoal, and truffles, powerful, full-bodied flavors, superb concentration, and a boatload of tannin. The wine is so complex aromatically, and the attack is so impressive that I can't resist drinking it. However, it should be even better in 5-8 years, and should last for another three decades." R. Parker for TWA, 96 pts. 06/09
 2 bottles
\$600-900

1075
Chateau La Tour Haut Brion 1991
Graves
u: into neck, lightly bin-soiled labels
 2 bottles
\$80-125

1076
Chateau Livran 1990
Medoc
 12 bottles (owc)
\$125-175

1077
Chateau Malartic Lagravieres 1998
Pessac-Leognan
 6 bottles
\$150-250

1078
Chateau Maucaillou 1975
Moulis-En-Medoc
 12 bottles (owc)
\$200-300

1079
Chateau Pape Clement 1978
Graves
 12 bottles (owc)
\$400-600

1080
Chateau Richeterre 1986
Margaux
u: three bottom neck, one very top
shoulder, nicked capsules, one heavily
bin-soiled label, three bin-soiled labels,
one label unattached
 4 bottles
\$60-90

1081
Chateau Roland La Garde 1998
Blaye
 6 bottles
\$125-175

1082
Chateau Smith Haut Lafitte Vertical
1996 (2 bts)
2000 (3 bts)
Pessac-Leognan
 5 bottles
\$400-600

1083
Chateau Petrus 1966
Pomerol
u: top shoulder, damp-stained label
 1 demi bottle
 Provenance: The Doctor's Collection.
\$600-900

1084
Chateau La Croix du Casse 1995
Pomerol
 8 bottles
\$175-275

1085
Chateau La Croix du Casse 1998
Pomerol
 12 bottles
\$250-400

1086
Chateau Barde Haut 1997
St. Emilion
 11 bottles
\$175-275

1087
Chateau Fourtet 2000
St. Emilion
 4 bottles
\$250-350

1088
Chateau Grand Mayne Vertical
1995 (5 bts)
1998 (6 bts)
St. Emilion
 11 bottles
\$300-450

1089
Chateau Haut Segottes 1996
St. Emilion
 10 bottles
\$200-300

1090
Chateau La Dominique 1971
St. Emilion
 12 bottles
\$250-400

1091
Chateau Larcis Ducasse 2002
St. Emilion
 12 bottles (owc)
\$200-300

1092
Chateau Larcis Ducasse 2002
St. Emilion
 12 bottles (owc)
\$200-300

1093
Chateau Pavie Macquin 1996
St. Emilion
 6 bottles
\$250-350

1094
Chateau Pavie Macquin 2000
St. Emilion
 2 bottles
\$150-200

1095
Chateau Quinault l'Enclos 1998
St. Emilion
 6 bottles
\$300-450

1096
Chateau Quinault l'Enclos 2000
St. Emilion
 6 bottles
\$250-350

1097
Mixed Bordeaux
Chateau Canon 1995 (2 bts)
Chateau Pipeau 1996 (2 bts)
Chateau Moulin St. Georges 1996
(4 bts)
St. Emilion
 8 bottles
\$100-150

1098
Chateau Sergants 1998
Lalande de Pomerol
 11 bottles
\$175-275

1099
Mixed Bordeaux
Chateau Branaire Ducru 1982 (1 bt)
 u: very top shoulder, nicked capsule, bin-soiled label
Chateau Chasse Spleen 1982 (2 bts)
 u: one bottom neck, one very top shoulder, lightly bin-soiled labels
Chateau du Tertre 1982 (1 bt) u: very top shoulder, nicked capsule, bin-soiled label
Chateau La Dominique 1982 (1 bt) u: very top shoulder, faded, glue-stained and bin-soiled label
Chateau La Louviere 1982 (4 bts) u: two into neck, two bottom neck, heavily bin-soiled label
Chateau Meyney 1982 (1 bt) u: very top shoulder, lightly corroded capsule, loose, damp-stained and bin-soiled label
Chateau Saint Pierre 1982 (2 bts) u: one very top shoulder, one top shoulder, oxidized capsules, heavily bin-soiled labels
Bordeaux
 12 bottles
\$450-600

1100
Mixed Bordeaux 2000
Branaire Ducru Duluc de Branaire Ducru 2000 (2 bts)
Chateau Villa Bel Air Graves 2000 (2 bts)
Second de Durfort 2000 (2 bts)
 6 bottles
\$125-200

1101
Mixed Bordeaux 2000
Chateau Bel Air 2000 (4 bts)
Chateau Roc De Cambes 2000 (2 bts)
Chateau Yon Figeac 2000 (1 bt)
Chateau Nenine 2000 (10 bts)
Bordeaux
 17 bottles
\$250-400

1102
Mixed Bordeaux
Chateau Gruaud Larose 1978 (1 bt) u: 2.5cm, heavily bin-soiled label, Cordier shaped bottle
Chateau La Lagune 1978 (1 bt) u: very top shoulder, glue-striped and bin-soiled label
Pavillon Rouge du Chateau Margaux 1981 (1 bt) u: very top shoulder, bin-soiled label
Vieux Chateau Certan 1981 (1 bt) u: very top shoulder, bin-soiled label
Chateau Ducru Beaucaillou 1983 (1 bt) u: into neck, bin-soiled label
Chateau Leoville Barton 1985 (1 bt) u: very top shoulder, bin-soiled label
Chateau Clerc Milon 1995 (1 bt) u: into neck, lightly bin-soiled label
Chateau Rieussec 1983 (1 bt) u: bottom neck, bin-soiled label
Bordeaux
 8 bottles
\$400-600

1103
Mixed Bordeaux
Chateau Brane Cantenac 1970 (1 bt) u: high-mid shoulder
1978 (1 bt) u: top shoulder, wrinkled, creased and loose label
1990 (1 bt) u: into neck
Chateau Camensac 1996 (3 bts)
Chateau Cantemerle 1979 (1 bt) u: very top shoulder
Chateau Carbonnieux 1996 (1 bt)
Chateau Lafon Rochet 1993 (1 bt) u: into neck, writing on label
Chateau Lamothe Bergeron 1990 (1 bt) u: into neck, writing on label
Mouton Cadet Rouge 1982 (1 bt) u: very top shoulder
Pavillon des Connetables 2000 (1 bt)
Bordeaux
 12 bottles
\$300-450

1104
Mixed Bordeaux
Barton & Geustier St. Emilion 1980
(1 bt)
Chateau Belgrave 1986 (1 bt)
Chateau d'Armailhac 1993 (1 bt)
Chateau Guibon 1992 (1 bt)
Chateau La Croix Margautot 1996
(1 bt)
Chateau Olivier Blanc 1989 (1 bt)
Chateau Roland La Garde 1998 (1
bt)
Chateau Teyssier 2000 (1 bt)
Gres des Oliviers Costieres de
Numes 1998 (1 bt)
Bordeaux
 9 bottles
\$200-300

1105
Chateau d'Yquem 1983
Sauternes, 1er Cru Superieur Classe
u: very top shoulder, stained label
 1 bottle
\$250-350

1106
Chateau d'Yquem 1988
Sauternes, 1er Cru Superieur
u: bottom neck (color appears
advanced for age)
 1 bottle
\$200-300

1107
Chateau Coutet 1975
Barsac, 1er Cru Classe
u: seven bottom neck, two very top
shoulder, three top shoulder, signs of
old seepage, corroded capsules, six
heavily stained labels
 12 bottles (owc)
 Provenance: The Doctor's Collection.
\$400-600

1108
Chateau Coutet 1975
Barsac, 1er Cru Classe
u: eight bottom neck, three very
top shoulder, signs of old seepage,
corroded capsules, wine-stained labels
 11 bottles (owc)
 Provenance: The Doctor's Collection.
\$375-550

1109
Chateau Coutet 1985
Barsac, 1er Cru Classe
u: three bottom neck, eight very top
shoulder, lightly oxidized capsules,
glue-stripped and lightly bin-soiled labels
 11 bottles
\$175-275

1110
Chateau Guiraud 1986
Sauternes, 1er Cru Classe
u: five bottom neck, three very top
shoulder, signs of old seepage, lightly
corroded capsules
 8 bottles
 Provenance: The Doctor's Collection.
\$325-475

1111
Mixed Sauternes
Chateau Guiraud
1988 (1 bt) u: bottom neck
1997 (1 bt)
Chateau Rieussec 1997 (1 bt)
Chateau Suduiraut 1988 (1 bt) u:
bottom neck
Sauternes
 4 bottles
\$125-200

Burgundy

1112
Aujoux Corton Le Pouget 1966
Cote de Beaune
u: 4.5cm, corroded capsule, signs of
old seepage, depressed cork, stained
label
 1 bottle
\$100-150

1113
Domaine Bizot Vosne Romanee Les
Jachees 2011
Cote de Nuits
 3 bottles
\$400-600

1114
Chevillon Nuits Saint Georges Les
Saint Georges 2002
Cote de Nuits
 4 bottles
\$400-600

1115
Dauvissat Camus Chablis Forest
2000
Chablis
one lightly wrinkled label, one stained
label
 3 bottles
\$125-175

1116
Prince Florent de Merode Corton
Marechaudes
1989 (1 bt) u: 1.5cm, bin-soiled label
1990 (1 bt) u: 1.0cm, bin-soiled label
Cote de Beaune
 2 bottles
\$200-300

1117
Mixed Vincent Girardin
Corton Perrieres 1997 (4 bts)
Corton Renardes Vieilles Vignes
1997 (2 bts)
Pommard 1er Cru Grand Epenots
Vieilles Vignes 1997 (4 bts)
Volnay 1er Cru Clos de Chenes 1997
(2 bts) one torn label
Cote de Beaune
 12 bottles
\$375-550

1118
Mixed Vincent Girardin
Gevrey Chambertin En Champs
Vieilles Vignes 2001 (1 bt)
Gevrey Chambertin Vieilles Vignes
2002 (8 bts) three with signs of
overfill seepage
2005 (2 bts)
Cote de Nuits
 11 bottles
\$500-750

1119
Comtes Lafon Volnay Santenots Du
Milleu 1996
Cote de Beaune
 3 bottles
\$250-375

1120
Louis Latour Batard Montrachet
1992
Cote de Beaune
u: 2.5cm, slightly depressed corks,
lightly corroded capsules
 3 bottles
 Provenance: The Doctor's Collection.
\$200-300

1121
Louis Latour Corton Clos de la Vigne
Au Saint 2003
Cote de Beaune
 3 bottles
\$125-175

1122
Moillard 1990
Echezeaux (1 bt) u: 1.0cm
Vosne Romanee (1 bt) u: 1.0cm
Cote de Nuits
 2 bottles
\$200-300

1123
Gerard Mugneret Chambolle
Musigny Les Charmes 2004
Cote de Nuits
 2 magnums
\$200-300

1124
G. Roumier Bonnes Mares 2010
Cote de Nuits
 Burghound, 96 pts. 01/13
 1 bottle
\$900-1,400

1125
Verget Bourgogne Grand Elevage 2000
Bourgogne
 3 bottles
\$60-90

1126
Mixed 1993 Red Burgundy
Amiot Servelle Chambolle Musigny
Derriere la Grange 1993 (1 bt) u:
 1.0cm, bin-soiled and nicked label
Arnoux Vosne Romanee Les
Suchots 1993 (1 bt) u: 1.5cm, badly
 torn label, lightly bin-soiled label
Chevillon Nuits St Georges
Chaignots 1993 (1 bt) u: 1.0cm,
 heavily bin-soiled label
Clerget Volnay Caillerets 1993 (1 bt)
 4 bottles
 Provenance: The Doctor's Collection.
\$425-650

1127
Mixed Burgundy
Des Varoilles Clos Vougeot 1973 (1
bt) u: 2.0cm, lightly bin-soiled label
Domaine Ampeau Puligny
Montrachet Les Combettes 1994
 (2 bts)
Domaine Corsin Saint Veran Vieilles
Vignes 2011 (3 bts)
Geisweiler and Fils Bourgogne 1976
 (3 bts) u: one 3.0cm, two 4.0cm, one
 corroded capsule, one with signs of
 old seepage, bin-soiled labels
Joseph Drouhin Vosne Romanee
1988 (1 bt) u: 2.5cm, stained and
 torn label
Burgundy
 10 bottles
\$200-300

1128
Mixed Burgundy
Louis Latour Corton Clos du Roi
2010 (1 bt)
Remoissenet Beaune Greves 1995
 (4 bts)
Jean Marc Millot Cote de Nuits
Village 1997 (1 bt)
Maurice Ecard Savigny Les Beaune
1er Cru Serpenteries 2002 (2 bts)
Pierre Bouree
Clos de la Roche 1989 (1 bt)
Gevrey Chambertin Clos de la
Justice 1997 (1 bt)
Burgundy
 10 bottles
\$275-400

Rhone

1129
M. Chapoutier Hermitage Le Pavillon
1990
Northern Rhone
 u: 2.5cm, lightly bin-soiled label
 1 bottle
\$250-400

1130
Mixed Yves Cuilleron
Condrieu Ayguets 2002 (2 500mls)
Condrieu La Petite Cote 2002 (10
500mls)
 12 500ml bottles
\$450-700

1131
E. Guigal Cote Rotie Brune et
Blonde 2003
Northern Rhone
 4 bottles
\$100-150

1132
Mixed Guigal
Cote Rote Brune et Blonde 1983
 (6 bts) u: 3.5cm, three signs of old
 seepage, three lightly corroded
 capsules, bin-soiled labels, one
 label with losses, loose vintage tags
Hermitage 1983 (6 bts) u: four
 2.5cm, two 3.5cm, two very lightly
 corroded capsules, nicked labels,
 one lightly torn label
 12 bottles
 Provenance: The Doctor's Collection.
\$600-900

1133
Mixed Rhone
M. Chapoutier
Saint Joseph Les Granits 1996 (3
bts) two heavily bin-soiled and
stained labels, one lightly bin-soiled
label
Hermitage Monier de la Sizeranne
1990 (2 bts) u: 2.5cm, lightly bin-
 soiled labels
H. Sorrel Hermitage Le Greal 1986
(1 bt) u: 4.5cm, lightly corroded
 capsule, nicked and lightly torn label
Northern Rhone
 6 bottles
\$175-250

1134
Les Caillou Chateauneuf du Pape
Vertical
2000 (4 bts)
2001 (4 bts)
Southern Rhone
 8 bottles
\$300-450

1135
Xavier Chateauneuf du Pape Cuvee
Anonyme 2007
Southern Rhone
 R. Parker for TWA, 96 pts. 10/12
 2 bottles
\$50-80

1136
Mixed Rhone
Chateau de Montfaucon Baron Louis
Cotes du Rhone 1998 (5 bts)
Saint Benoit Chateauneuf du Pape
2001 (1 bt)
 6 bottles
\$125-200

1137
Mixed French Reds
Charles Joguet Clos du Chene Vert
Chinon 1997 (1 bt)
Guigal Hermitage 2000 (4 bts)
Jerome Bressy Gourt du Mautens
Rasteau 1998 (3 bts)
France
 8 bottles
\$300-450

1138
A Trip Through France
Domaine Pagnotta Rully Clos de
Bellecroix 2003 (1 bt) writing on
label
Jerome Bressy Rasteau Gourt de
Mautens 1999 (6 bts)
Tissier Sancerre 2005 (5 bts)
 12 bottles
\$200-300

Italy

1139
Giovanni Rosso Barolo Cerretta
2004
Piedmont
 1 magnum
\$125-175

1140
Giovanni Rosso Barolo Cerretta
2004
Piedmont
 4 bottles
\$250-350

1141
Giovanni Rosso Barolo La Serra
2004
Piedmont
 4 bottles
\$250-350

1142
Mixed Barolo
 Oddero Barolo 1978 (1 bt) u: 3.5cm
 Poderi Scanavino Barolo 1971 (2
 bts) u: top shoulder, one bin-soiled
 label, one heavily bin-soiled, stained
 and tattered label with heavy losses
Piedmont
 3 bottles
\$125-175

1143
Castello di Ama L'Apparita 1996
Tuscany
 6 bottles
\$350-500

1144
**Villa Antinori Chianti Classico
 Riserva 1958**
Tuscany
*u: very top shoulder, lightly nicked and
 bin-soiled label*
 1 bottle
\$70-100

1145
**Fossi Chianti Classico Riserva
 Vertical**
 1959 (1 bt) u: bottom neck, signs of
 old seepage
 1961 (1 bt) u: bottom neck, signs
 of old seepage, lightly corroded
 capsule
 1969 (2 bts) u: one bottom neck, one
 very top shoulder
Tuscany
 4 bottles
 Provenance: The Doctor's Collection.
\$125-200

1146
**Monsanto Chianti Classico Il Poggio
 Riserva 1995**
Tuscany
 12 bottles
\$400-600

1147
**Monsanto Chianti Classico Riserva
 1990 (4 bts) u: bottom neck
 2007 (8 bts)**
Tuscany
 12 bottles
\$200-300

1148
Mixed Monsanto
 Chianti Classico 1971 (2 bts)
 Chianti Classico Riserva
 1966 (1 bt) u: bottom neck, bin-
 soiled label
 1967 (1 bt) u: mid shoulder, bin-
 soiled label
 1970 (1 bt) u: very top shoulder, bin-
 soiled label
 1971 (5 bts) u: two very top shoulder,
 two top shoulder, one high shoulder,
 bin-soiled labels
Tuscany
 10 bottles
 Provenance: The Doctor's Collection.
\$400-600

1149
**Morisfarms Morellino di Scansano
 1997**
Tuscany
 10 bottles
\$250-375

1150
Tenuta San Guido Guidalberto 2011
Tuscany
 6 bottles
\$150-225

1151
**Fattoria Selvapiana Chianti Rufina
 Riserva 1964**
Tuscany
*u: one very top shoulder, one high-mid
 shoulder, bin-soiled and glue-stripped
 labels*
 2 bottles
\$150-250

1152
**Tenuta Sette Ponti Morellino di
 Scansano Poggio al Lupo 2004**
Tuscany
 12 bottles (oc)
\$200-300

1153
Sette Ponti Oreno 2008
Tuscany
 5 bottles
\$200-300

1154
Mixed Brunello
 Banfi Poggio Alle Mura Brunello di
 Montalcino 2007 (2 bts)
 Lisini
 Brunello di Montalcino Riserva 1973
 (1 bt) u: bottom neck, bin-soiled
 label
 Brunello di Montalcino
 1977 (2 bts) u: one bottom neck, one
 very top shoulder, lightly bin-soiled
 labels
 2007 (4 bts)
Tuscany
 9 bottles
\$350-500

1155
Mixed Super Tuscans
 Antinori Guado al Tasso 1999 (2 bts)
 Tenuta San Guido Sassicaia 1999
 (2 bts)
Tuscany
 4 bottles
\$350-500

1156
**Serego Alighieri Amarone della
 Valpolicella 1981**
Veneto
 12 bottles
\$300-450

1157
Mixed Amarone
 Fabiano Amarone Della Valpolicella
 1995 (3 bts) bin-soiled labels
 Zenato Ripassa Valpolicella 2007
 (3 bts)
Veneto
 6 bottles
\$100-150

1158
Umberto Cesari Liano 1997
Bologna
 12 bottles
\$150-225

1159
Firriato Paceco Harmonium 2007
Sicily
 "The 2007 Harmonium (Nero
 d'Avola) is a richly-textured offering
 laced with dark red raspberries,
 flowers, spices and French oak. The
 expansive, generous Harmonium
 delivers gorgeous depth, clarity and
 persistence on the palate in a full-
 bodied expression of Nero d'Avola.
 The French oak could be a little less
 intrusive, but this is nevertheless a
 highly successful wine from Firriato.
 Anticipated maturity: 2012-2022." A.
 Galloni for TWA, 91 pts. 06/10
 9 bottles
\$100-150

1160
Mixed Italian
Altare Barbera d'Alba 1988 (2 bts)
 u: bottom neck, slight signs of old seepage
Banfi Brunello di Montalcino 1988 (2 bts)
 u: top shoulder, one corroded capsule, bin-soiled labels
Fossi Chianti 1988 (2 bts)
 u: one very top shoulder, one high shoulder, one with signs of old seepage, one torn and corroded capsule, one damp-stained label, lightly bin-soiled labels
Viticchio Prunajo 1988 (6 bts)
 u: into neck, lightly corroded capsules, lightly bin-soiled labels
 12 bottles
 Provenance: The Doctor's Collection.
\$300-450

1161
Mixed Italian
Tenuta Sette Ponti Morellino di Scansano Poggio al Lupo 2004 (7 bts)
Barone Ricasoli Rocca Guicciarda Chianti Classico Riserva 2000 (1 bt)
Fazi Battaglia Passo del Lupo Rosso Conero Riserva 2003 (1 bt)
Feudi Saraceni Pinot Grigio 2008 (1 bt)
Palazzozone Rubbio 2003 (1 bt)
Varaldo Fantasia 4.20 Langhe 2000 (1 bt)
 12 bottles
\$125-200

Spain

1162
Vega Sicilia Unico 1989
Ribera del Duero
 u: into neck, scuffed label
 1 bottle
\$300-450

1163
Mixed Rioja
La Rioja Alta Rioja Reserva 904 1973 (1 bt)
 u: into neck, lightly bin-soiled label
Marques de Caceres Rioja Reserva 1986 (2 bts)
 u: one into neck, one very top shoulder, lightly bin-soiled label
1990 (1 bt)
 u: bottom neck, oxidized capsule
Marques de Murrieta Rioja 1950 (1 bt)
 u: top shoulder, oxidized capsule, damp-stained, torn and stained label, loose vintage tag
Rioja
 5 bottles
\$250-400

1164
Mixed Spanish Reds
Bodega Weinert Cavas de Weinert Gran Vino 1985 (2 bts)
 u: bottom neck, bin-soiled labels
Bodegas Alejandro Fernandez Tinto Pesquera Janus Reserva Especial 1982 (1 bt)
 u: into neck, bin-soiled and lightly torn label
Miguel Torres Gran Coronas Cabernet Sauvignon Gran Reserva 1975 (1 bt)
 u: 5.0cm, signs of old seepage, lightly corroded capsule, bin-soiled and torn label
Remelluri Rioja 1985 (2 bts)
 u: one bottom neck, one top shoulder
 6 bottles
\$200-300

Other Europe

1165
Kracher No. 10
Trockenbeerenauslese Grand Cuvee 1998
Burgenland
 "Produced from 50% Chardonnay and 50% Welschriesling, Kracher's 1998 Grande Cuvee Trockenbeerenauslese Nouvelle Vague Number 10 reveals hints of sweet oak in its otherwise jammy yellow fruit-dominated aromatics. This medium to full-bodied wine has abundant candied white grapes, and apples intermingled with poached pears in its peppery character. It is thick, spicy, oily-textured, and possesses an amazingly long, apricot-flavored finish. Anticipated maturity: Now-2030." P. Rovani for TWA, 94 pts. 04/01
 5 demi bottles
\$125-200

1166
Mixed White Wine
Karl von Stetten Hainfelder Ordensgut Kabinett 1983 (1 bt)
 u: 4.0cm, stained label
Kurt Darting Durkheimer Fronhof Scheurebe Eiswein 1989 (1 bt)
 u: less than 1.0cm
Marcel Deiss Riesling Saint Hippolyte 2000 (1 bt)
 writing on label
Preiss Henny Gewurztraminer 1979 (1 bt)
 u: 5.0cm
Sanctus Jacobus Wiltinger Kupp Riesling Auslese 1976 (1 bt)
 u: 2.5cm
Trimbach Pinot Blanc 1992 (4 bts)
 u: 2.0cm, lightly bin-soiled label
Von Simmern Eltviller Sonnenberg Riesling Kabinett 1971 (1 bt)
 u: 1.5cm
Rheingau
 10 bottles
\$300-450

Portugal

1167
Croft Vintage Port 1975
Oporto
 u: eleven bottom neck or better, one very top shoulder, one lightly corroded capsule, signs of old seepage
 12 bottles (owc)
 Provenance: The Doctor's Collection.
\$400-600

1168
Feist Vintage Port 1970
Oporto
 cracked wax capsules, signs of old seepage, heavily bin-soiled and partially missing labels
 12 bottles
\$400-600

1169
Ramos Pinto Selected Reserve Port 1890
Oporto
 u: into neck, one nicked capsule, lightly bin-soiled labels, one loose label, labels bear embossed Rothschild (Mouton) crest, bottled for Baron Henri de Rothschild, unknown bottling date
 2 bottles
\$800-1,200

1170
Sandeman Vintage Port 1977
Oporto
 u: eleven into neck, one bottom neck, one corroded capsule, three lightly corroded capsules, signs of old seepage
 12 bottles (owc)
 Provenance: The Doctor's Collection.
\$400-600

1171
Sandeman Vintage Port 1982
Oporto
 12 bottles
\$250-400

1172
Mixed Port
Dow 1970 (1 bt)
Warre 1970 (1 bt)
Graham 1977 (1 bt)
Oporto
 3 bottles
\$150-250

Australia

1173

Clarendon Hills Hickenbotham Cabernet Sauvignon 2001

South Australia

"The inky/purple-colored 2001 Cabernet Sauvignon Hickenbotham [sic] Vineyard reveals a surprisingly elegant cedary, earthy, spicy, tobacco-infused bouquet, full body, outstanding concentration, and plenty of firm, austere tannin in the finish. Patience will be a virtue. Anticipated maturity: 2008-2020." R. Parker for TWA, 91 pts. 08/03

10 bottles
\$250-400

1174

Clarendon Hills Liandra Shiraz 1998

South Australia

"The dark ruby/purple-colored 1998 Shiraz Liandra Vineyard (1,800 cases) exhibits beautiful, sweet, blackberry fruit intertwined with pepper, saddle leather, and spice. Rhone-like in its aromatics, this rich, full-bodied, compelling Shiraz displays low acidity as well as a fleshy, succulent mouth-feel. It should drink well for 10-15 years." R. Parker for TWA, 91 pts.

02/02
6 bottles
\$150-200

1175

Dog Ridge Reserve Petit Verdot 2005

South Australia

12 bottles
\$175-275

1176

Dutschke St. Jakobi Shiraz 1999

South Australia

9 bottles
\$175-275

1177

Groom Barossa Valley Shiraz 2002

Barossa

6 bottles
\$100-150

1178

**Mixed Henschke Johann's Garden 1996 (2 bts)
Keyneton Estate 1995 (2 bts)**

Australia

4 bottles
\$100-150

1179

Langmeil Shiraz 1999

South Australia

8 bottles
\$125-175

1180

Marquis Philips Shiraz No. 9 2002

South Australia

three stained labels

"The enormously endowed, ostentatious, yet captivating 2002 Shiraz 9 is a sexy effort. There are 1,500 cases of this blockbuster. Its inky plum/purple color is followed by sumptuous aromas of creme de cassis, blackberry liqueur, smoked meats, and toasty American oak (from aging in 100% new American barrels). Opulent, viscous, and thick, this succulent Shiraz is meant to offer immediate appeal. It should last for 7-8 years, becoming more civilized and measured with additional age." R. Parker for TWA, 96 pts. 08/03

10 bottles
\$250-400

1181

Mollydooker Blue Eyed Boy 2009

South Australia

5 magnums
\$550-800

1182

Mollydooker Carnival of Love 2010

McLaren Vale

3 bottles
\$125-175

1183

Mollydooker Goose Bumps 2006

South Australia

10 bottles
\$300-450

1184

Mixed Mollydooker

Blue Eyed Boy

2007 (2 bts)

2009 (3 bts)

Gigglepot 2007 (1 bt)

2009 (4 bts)

Sip It Forward 2008 (4 bts)

South Australia

14 bottles
\$400-600

1185

Penfolds Grange 1982

South Australia

u: bottom neck, lightly bin-soiled label

R. Parker for TWA, 97 pts. 06/09

1 bottle
\$250-350

1186

Penfolds Grange 1986

South Australia

u: very top shoulder, one slightly depressed cork, lightly bin-soiled labels

L. Perrotti-Brown for TWA, 97 pts.

05/12

2 bottles

\$800-1,200

1187

Thorpe Wines Reserve Cabernet Sauvignon 2004

South Australia

12 bottles

\$200-300

1188

Veritas Winery Heysen Vineyard Shiraz 1999

South Australia

one wrinkled and loose label

10 bottles

\$250-400

1189

Mixed Australian Shiraz

Ausvetia Shiraz 1998 (2 bts)

Clarendon Hills Syrah Liandra 1998

(3 bts)

Peter Lehmann Shiraz The Barossa

1999 (1 bt)

6 bottles

\$175-275

1190

Mixed Australian

Haan Semillon 2001 (1 bt)

Hamilton's Ewell Vineyards

Stonegarden Grenache Shiraz 2002

(1 bt)

Henrys Drive Cabernet Sauvignon

2002 (5 bts)

Marquis Philips

Shiraz No. S2 2002 (1 bt)

Shiraz Southeastern 2002 (6 bts)

Possums Shiraz 2002 (1 bt)

Rosemount Show Reserve Shiraz

2002 (1 bt)

Tatachilla Cabernet Sauvignon 1998

(2 bts)

23 bottles

\$350-500

1191

Mixed Australian Wines

Hewitson Shiraz L'Oizeau 1998 (2

bts)

Rosemount Estate

Cabernet Sauvignon Show Reserve

Coonawarra 1997 (1 bt)

Grenache Syrah Mourvedre 1998

(9 bts)

12 bottles

\$250-400

1192
Mixed Australian Wines
Orlando Wines Jacob's Creek Merlot
1990 (2 bts) u: into neck, scuffed
labels
Rosemont Estate Mountain Blue
Mudgee 1996 (2 bts)
Seppelt Classic Cabernet/Shiraz
1993 (1 bt)
Yalumba
The Menzies Cabernet Sauvignon
1996 (2 bts)
The Signature 1995 (3 bts)
Australia
 10 bottles
\$200-300

1193
Mixed Wines
Greywacke Wild Sauvignon 2011
(4 bts)
Graham Beck Shiraz 2005 (8 bts)
 12 bottles
\$80-125

California

1194
Araujo Estate Eisele Vineyard
Cabernet Sauvignon Vertical
1995 (1 bt) u: into neck
2005 (1 bt)
Napa
 2 bottles
\$350-500

1195
Beringer Sbragia Limited Release
Chardonnay 1999
 10 bottles
\$200-300

1196
Bugay Vineyards Syrah 2006
Santa Rosa
 7 bottles
\$150-200

1197
Caymus Special Selection 1989
Napa
u: three into neck, one bottom neck
 4 bottles
\$275-400

1198
Caymus Special Selection Cabernet
Sauvignon 1995
Napa
u: bottom neck
 1 magnum
\$200-300

1199
Caymus Cabernet Sauvignon
1991 (1 bt) u: bottom neck
1992 (4 bts) u: bottom neck
Napa
 5 bottles
\$150-225

1200
Colgin IX Estate Red Wine 2005
Napa
 1 bottle
\$150-225

1201
Colgin IX Estate Red Wine 2006
Napa
 5 bottles
\$1,400-2,000

1202
Colgin IX Estate Red Wine 2007
Napa
 6 bottles (owc)
\$1,800-2,700

1203
Colgin IX Estate Red Wine 2008
Napa
 6 bottles (owc)
\$900-1,350

1204
Colgin Cariad 2005
Napa
 6 bottles (owc)
\$1,400-2,000

1205
Colgin Cariad 2007
Napa
 6 bottles (owc)
\$2,000-3,000

1206
Colgin Cariad 2008
Napa
 3 bottles (owc)
\$400-600

1207
Colgin Tyschson Hill 2008
Napa
 3 bottles (owc)
\$450-675

1208
Del Bondio Cabernet Sauvignon
2001
Napa
 12 bottles
\$200-300

1209
Del Bondio Cabernet Sauvignon
2001
Napa
 12 bottles
\$200-300

1210
Dominus Estate Proprietary Red
1996
Napa
 1 magnum
\$125-200

1211
Dominus Estate Proprietary Red
1997
Napa
 1 bottle
\$150-225

1212
Dominus Estate Proprietary Red
1999
Napa
 1 bottle
\$80-125

1213
Duckhorn Three Palms Merlot 2007
Napa
 1 magnum
\$100-150

1214
Duckhorn Vineyards Merlot Napa
Valley 1992
Napa
u: into neck
 4 magnums
\$250-350

1215
Dunn Napa Valley 1991
Napa
u: bottom neck, lightly nicked label
 8 bottles
\$325-475

1216
Dunn Howell Mountain Cabernet
Sauvignon Vertical
1982 (3 bts) u: bottom neck, one
stained label, cracked wax capsules
1984 (1 bt) u: into neck, stained
labels, cracked wax capsules
1986 (1 bt) u: into neck, lightly bin-
soiled label
1987 (2 bts) u: into neck, lightly bin-
soiled label
Napa
 7 bottles
\$400-600

1217
Mixed Robert Foley
Charbono
2005 (1 bt)
2007 (2 bts)
2008 (1 bt)
2008 (1 bt)
Claret 2003 (1 bt)
2005 (1 bt)
Petite Sirah Musclemann 2006 (2 bts)
California
 9 bottles
\$300-450

1218
Mixed Robert Foley Magnums
Petite Sirah Pepperland 2006 (1 mag)
Claret 2002 (1 mag) writing on label
2004 (1 mag)
California
 3 magnums
\$350-500

1219
Gemstone Estate Red
2006 (1 bt)
2007 (1 bt)
2008 (1 bt)
Napa
 3 bottles
\$150-200

1220
Gemstone Estate Red
2007 (1 bt)
2008 (1 bt)
2009 (1 bt)
Napa
 3 bottles
\$150-200

1221
Grgich Hills Cabernet Sauvignon
1997
Napa
 5 bottles
\$200-300

1222
Mixed Heitz Cellars
Bella Oaks Cabernet Sauvignon
1996 (1 bt)
Martha's Vineyard Cabernet
Sauvignon 1991 (1 bt)
1996 (1 bt)
Napa
 3 bottles
\$175-275

1223
Herb Lamb Vineyards HL Herb
Lamb Vineyard Cabernet Sauvignon
Vertical
1997 (2 bts) stained label
2001 (1 bt)
2006 (1 bt)
Napa
 4 bottles
\$275-400

1224
Hourglass Cabernet Sauvignon
Vertical
2001 (2 bts)
2003 (1 bt)
2006 (1 bt)
Napa
 4 bottles
\$250-375

1225
Hoffman Cellars HMR Doctor's
Reserve Cabernet Sauvignon 1975
Paso Robles
u: five very top shoulder, seven top
shoulder, corroded capsules, heavily
bin-soiled labels
 12 bottles
\$250-400

1226
Jordan Cabernet Sauvignon
1986 (4 bts)
1988 (2 bts)
Sonoma
 6 bottles
\$75-125

1227
Matanzas Creek Merlot 1999
Sonoma
 6 bottles
\$100-150

1228
Robert Mondavi Cabernet
Sauvignon 1997
Napa
 6 bottles
\$125-175

1229
Robert Mondavi Cabernet
Sauvignon
1975 (1 bt) u: high shoulder, lightly
bin-soiled label
1991 (1 bt) u: into neck, scuffed label
1997 (1 bt)
Napa
 3 bottles
\$60-90

1230
Robert Mondavi Reserve Cabernet
Sauvignon 1994
Napa
 6 bottles (owc)
\$600-900

1231
Robert Mondavi Reserve Cabernet
Sauvignon 1995
Napa
 6 bottles (owc)
\$300-450

1232
Robert Mondavi Reserve Cabernet
Sauvignon 1996
Napa
 5 bottles (owc)
\$200-300

1233
Robert Mondavi Reserve Cabernet
Sauvignon 1997
Napa
 4 bottles
\$275-400

1234
Robert Mondavi Reserve Cabernet
Sauvignon 1998
Napa
 3 bottles
\$125-175

1235
Mixed Neyers Zinfandel
Pato Zinfandel 2000 (9 bts)
Tofanelli Zinfandel 2000 (7 bts)
 16 bottles
\$325-500

1236
Opus One Proprietary Red 1994
Napa
u: bottom neck
 1 bottle
\$200-300

1237
Opus One Proprietary Red 1994
Napa
u: into neck
 2 bottles
\$400-600

1238
 Mixed Orin Swift
 Mercury Head 2005 (1 bt)
 Papillon
 2005 (1 bt)
 2006 (2 bts)
 The Prisoner 2006 (2 bts)
California
 6 bottles
\$150-225

1239
 Ottimino Biglieri Dry Creek Valley
 Little 8 Zinfandel 2007
Sonoma
 9 bottles
\$150-225

1240
 Pahlmeyer
 Proprietary Red
 1995 (2 bts)
 1996 (2 bts)
 Chardonnay 1994 (2 bts)
Napa
 6 bottles
\$325-425

1241
 Mixed Syrah
 Pax Vineyards
 Richards Family Vineyard 2006 (2 bts)
 The Knob Alder Springs Vineyard
 2006 (1 bt)
 Saxum
 James Berry Vineyard 2011 (1 bt)
 4 bottles
\$275-375

1242
 Ramey Wine Cellars Chardonnay
 2009
North Coast
 6 bottles
\$70-100

1243
 Mixed Ravenswood Single Vineyard
 Zinfandel
 Belloni 1992 (5 bts) u: bottom neck
 Wood Road Belloni 1993 (2 bts) u:
 bottom neck
 Dickerson
 1992 (1 bt) u: bottom neck
 1994 (1 bt) u: bottom neck
 Old Hill
 1993 (1 bt) u: bottom neck
 1994 (2 bts) u: bottom neck
Sonoma
 12 bottles
\$250-400

1244
 Ridge Geyserville 1992
Santa Cruz
 u: bottom neck
 12 bottles
\$200-300

1245
 Ridge Santa Cruz Mountains
 Cabernet 1993
Santa Cruz
 u: bottom neck
 6 bottles
\$150-250

1246
 Mixed Ridge
 Paso Robles Zinfandel 1993 (2 bts)
 u: bottom neck
 Geyserville
 1992 (1 bt) u: bottom neck
 1993 (5 bts) u: bottom neck
Santa Cruz
 8 bottles
\$150-225

1247
 Rivers-Marie Pinot Noir
 Gioia Vineyard 2011 (1 bt)
 Old Vines Summa
 2009 (3 bts)
 2010 (1 bt)
 Silver Eagle Vineyard 2011 (1 bt)
 Summa Vineyard
 2010 (1 bt)
 2011 (2 bts)
Sonoma
 9 bottles
\$450-650

1248
 Schrader Cellars Beckstoffer To-
 Kalon Vineyard Cabernet Sauvignon
 2003
Napa
 1 bottle
\$125-200

1249
 Schrader Cellars RBS Beckstoffer
 To-Kalon Vineyard Cabernet
 Sauvignon 2003
Napa
 one with signs of old seepage
 2 bottles
\$250-400

1250
 Scholium Project Babylon Tenbrink
 Vineyards 2003
Suisun Valley
 3 bottles
\$70-100

1251
 Michael Scott Cabernet Sauvignon
 Bella Oaks 2002
Napa
 12 bottles
\$200-300

1252
 Michael Scott Cabernet Sauvignon
 Del Bondio Bella Oaks Vineyard
 2002
Napa
 one torn label
 12 bottles
\$200-300

1253
 Shafer Hillside Select Cabernet
 Sauvignon 1994
Napa
 u: into neck, label creased at edge
 1 bottle
\$250-400

1254
 Silver Oak Cabernet Sauvignon
 Bonny's Vineyard
 1989 (1 bt) u: into neck
 1990 (1 bt) u: bottom neck
 Napa Valley 1991 (2 bts) u: into neck
Napa
 4 bottles
\$350-500

1255
 Silver Oak Alexander Valley
 Cabernet Sauvignon Vertical
 1989 (4 bts) u: bottom neck
 1991 (1 bt) u: bottom neck
 1992 (4 bts) u: bottom neck
 1993 (1 bt) u: bottom neck, lightly
 nicked label
Sonoma
 10 bottles
\$350-500

1256
 Spottswoode Cabernet Sauvignon
 1990
Napa
 u: bottom neck, one scuffed label
 4 bottles
\$200-300

1257
 Mixed Storybook Mountain
 Vineyards
 Estate Napa Zinfandel 1992 (8 bts)
 u: bottom neck
 Eastern Exposures Estate Napa
 Zinfandel 1992 (1 bt) u: bottom neck
Napa
 9 bottles
\$175-275

1258
Tensley Colson Canyon Syrah 2010
Central Coast
 8 bottles
\$150-200

1259
Sean Thackrey Andromeda 2006
North Coast
 12 bottles
\$250-400

1260
Sean Thackrey Andromeda 2006
North Coast
 10 bottles
\$300-450

1261
Sean Thackrey Andromeda 2007
North Coast
 3 magnums
\$175-275

1262
Sean Thackrey Andromeda
2003 (2 bts)
2006 (4 bts)
2008 (5 bts)
North Coast
 11 bottles
\$350-500

1263
Sean Thackrey Andromeda
2003 (1 mag)
2004 (2 mags)
2006 (2 mags)
2009 (1 mag)
North Coast
 6 magnums
\$400-600

1264
Sean Thackrey Aquila 2003
North Coast
 16 bottles
\$475-725

1265
Sean Thackrey Aquila
2000 (6 bts)
2002 (5 bts)
North Coast
 11 bottles
\$300-450

1266
Sean Thackrey Aquila
2000 (1 mag)
2003 (1 mag)
North Coast
 2 magnums
\$125-200

1267
Sean Thackrey Cassiopeia 2010
North Coast
 12 bottles
\$300-450

1268
Sean Thackrey Cassiopeia 2010
North Coast
 12 bottles
\$300-450

1269
Sean Thackrey Orion 2005
Napa
 3 magnums
\$300-450

1270
Sean Thackrey Orion 2006
Napa
 R. Parker for TWA, 98 pts. 08/09
 2 magnums
\$250-400

1271
Sean Thackrey Orion 2006
Napa
 5 bottles
\$300-450

1272
Sean Thackrey Orion 2007
Napa
 R. Parker for TWA, 98+ pts. 08/09
 3 magnums
\$450-675

1273
Sean Thackrey Orion 2008
North Coast
 R. Parker for TWA, 95 pts. 08/10
 3 magnums
\$350-550

1274
Sean Thackrey Orion 2008
Napa
 6 bottles
\$350-550

1275
Sean Thackrey Pleiades Old Vines
XIII
California
 9 bottles
\$100-150

1276
 No lot.

1277
Sean Thackrey Pleiades Old Vines
XVI
California
 11 bottles
\$125-200

1278
Sean Thackrey Sirius 2003
Napa
 12 bottles
\$600-900

1279
Sean Thackrey Sirius
2002 (2 bts)
2004 (2 bts)
2006 (8 bts)
Napa
 12 bottles
\$550-800

1280
Sean Thackrey Sirius
2003 (1 mag)
2004 (3 mags)
2005 (2 mags)
Napa
 6 magnums
\$500-700

1281
Sean Thackrey Sirius
2003 (1 mag)
2008 (3 mags)
2009 (1 mag)
Napa
 5 magnums
\$500-700

1282
Sean Thackrey Sirius
2006 (1 mag)
2007 (3 mags)
Napa
 4 magnums
\$400-600

1283
Sean Thackrey Sirius
2006 (6 bts) R. Parker, 95+ pts. 08/09
2008 (6 bts)
Napa
 12 bottles
\$500-700

1284

Sean Thackrey
Orion Old Vines
1994 (1 bt)
1995 (2 bts)
Orion
2002 (3 bts)
2003 (4 bts)

Napa
10 bottles
\$500-750

1285

Philip Togni Cabernet Sauvignon
1994

Napa
1 magnum
\$200-300

1286

Philip Togni Cabernet Sauvignon
1994

Napa
u: into neck, one nicked label
8 bottles
\$800-1,200

1287

Philip Togni Black Muscat Ca' Togni
Vertical
1997 (1 demi)
1998 (1 demi)
1999 (2 demis)

Napa
4 demi bottles
\$70-100

1288

TOR Kenward Family Wines
Beckstoffer To-Kalon Vineyard
Cabernet Sauvignon Vertical
2005 (2 bts)
2006 (2 bts)

Napa
4 bottles
\$300-450

1289

Turnbull Cabernet Sauvignon 2000

Napa
12 bottles
\$300-450

1290

Turnbull Cabernet Sauvignon
Vertical
1999 (2 bts)
2000 (4 bts)

Napa
6 bottles
\$150-225

1291

Villa Mt. Eden Signature Series
Cabernet Sauvignon 1995

Central Coast
6 bottles (owc)
\$175-250

1292

Mixed Cabernet Sauvignon 1997
Freemark Abbey Bosche Cabernet
Sauvignon 1997 (1 bt)
Jordan Sonoma Cabernet 1997 (1
bt)

Raymond Reserve Cabernet
Sauvignon 1997 (1 bt)
Stag's Leap Wines Cabernet
Sauvignon
1997 (1 bt)
1997 (2 bts)
California
6 bottles
\$200-300

1293

Mixed Cabernet Sauvignon
Arns Cabernet Sauvignon 1996 (1 bt)
Buccella Cabernet Sauvignon 2005
(1 bt)

Burgess Cellars Cabernet Sauvignon
1992 (2 bts) u: bottom neck
Cavus Cabernet Sauvignon 2005
(2 bts)
Jones Family Vineyards Cabernet
Sauvignon 1997 (1 bt)
Tom Eddy Cabernet Sauvignon 1994
(2 bts) u: into neck
Shelter Headwater Cabernet
Sauvignon 2005 (3 bts)

California
12 bottles
\$400-600

1294

Mixed Cabernet Sauvignon
Behrens & Hitchcock Ode to
Picasso 1997 (1 mag)
Melka Métisse 1996 (1 mag)

Napa
2 magnums
\$150-225

1295

Mixed California
Beringer Vineyards Cabernet
Sauvignon Rhine House Selection
1992 (1 bt) u: into neck
Bevan Cellars Showket Vineyards
Cabernet Sauvignon 2006 (1 bt)
Duckhorn Napa Valley Cabernet
Sauvignon 1983 (1 bt) u: bottom
neck

Flora Springs Rutherford Hillside
Reserve Cabernet Sauvignon 1995
(2 bts) u: into neck
Ghost Block Cabernet Sauvignon
Single Vineyard Yountville 2005 (1 bt)
Harris Estate Vineyards Very Special
Reserve Treva's Vineyard Cabernet
Sauvignon 2002 (1 bt)
Karl Lawrence Cabernet Sauvignon
Reserve 1997 (1 bt)

Lokoya
Diamond Mountain Cabernet
Sauvignon 1997 (1 bt)
Howell Mountain Cabernet
Sauvignon 1995 (2 bts)
Saddleback Cellars Nils Venge
Estate Vineyard Cabernet Sauvignon
1997 (1 bt)
12 bottles
\$600-900

1296

Mixed Cabernet Sauvignon
Cakebread Cabernet Sauvignon
1998 (1 bt)
1998 (2 bts)
Carmenet Moon Mountain Reserve
Cabernet Sauvignon 1998 (4 bts)
Clos Pegase Cabernet Sauvignon
1998 (1 bt)
Flora Springs Cabernet Sauvignon
1998 (2 bts)

Raymond Reserve Cabernet
Sauvignon 1998 (1 bt)
Whitehall Lane Cabernet Sauvignon
1998 (1 bt)
California
12 bottles
\$300-450

1297

Mixed California Cabernet
Heitz Martha's Vineyard Cabernet
Sauvignon 1984 (1 bt) u: into neck,
oxidized capsule, stained and bin-
soiled label

Dominus Proprietary Red 1987 (1 bt)
u: into neck, stained and bin-soiled
label
Beaulieu Vineyards Private Reserve
Georges de Latour 1980 (1 bt) u: into
neck, lightly bin-soiled label
Inglenook Limited Cask Cabernet
Sauvignon 1978 (1 bt) u: into neck,
lightly bin-soiled label

Napa
4 bottles
\$275-400

1298
 Mixed Cabernet Magnums
 Hourglass Cabernet Sauvignon 2005 (1 mag)
 Cornerstone Cellars Beatty Ranch Cabernet Sauvignon 1993 (1 mag) u: into neck
 Lewis Cellars Reserve Cabernet Sauvignon 1997 (1 mag)
 TOR Kenward Family Wines West Block Cabernet Sauvignon 2001 (1 mag) signed bottle
 Vineyard 29 Cabernet Sauvignon 1994 (1 mag)
 1996 (1 mag)
California
 6 magnums
\$600-900

1299
 Mixed California Legends
 Chateau Montelena The Montelena Estate Cabernet Sauvignon 1997 (1 bt)
 Dunn Vineyards Howell Mountain Cabernet Sauvignon 1995 (2 bts) u: into neck
 1997 (1 bt) cracked wax capsule
 Pride Mountain Vineyards Cabernet Sauvignon Reserve 2005 (1 bt)
 David Arthur Elevation 1147 Cabernet Sauvignon 1998 (1 bt)
Napa
 6 bottles
\$450-700

1300
 Mixed Californian Blends
 Quintessa Proprietary Red 1995 (2 bts)
 Ridge
 Geyserville 2005 (2 demis)
 Three Valleys 2008 (1 bt)
 Montelena St. Vincent Proprietary Red 1994 (2 bts) u: bottom neck
 Pride Reserve Claret 1996 (1 bt)
 2 demi bottles
 6 bottles
\$200-300

1301
 Mixed California Dessert Wines
 Franciscan Estate Port Limited Selection 2005 (1 demi)
 Tobin James Liquid Love Late Harvest Zinfandel 2005 (1 demi)
 2007 (2 demis)
 Charisma Dessert Wine 2006 (1 demi)
 V. Sattui Winery Vintage Port 1997 (1 bt)
 5 demi bottles
 1 bottle
\$100-150

1302
 Mixed California
 Altamura Cabernet Sauvignon 2001 (1 bt)
 Stag's Leap Wine Cellars Artemis 2001 (1 bt)
 Stonestreet Alexander Cabernet Sauvignon 2001 (1 bt)
 Anabella Special Selection Cabernet Sauvignon 2002 (1 bt)
 Cakebread Cabernet Sauvignon 2003 (1 bt)
 Anabella Merlot 2004 (1 bt)
 Marinus Proprietary Red 2005 (1 bt)
 Silver Oak Alexander Cabernet Sauvignon 2008 (1 bt)
 Caymus Cabernet Sauvignon 2009 (1 bt)
 Silver Oak Alexander Cabernet Sauvignon 2009 (1 bt)
 Caymus Cabernet Sauvignon 2010 (1 bt)
 Stag's Leap Wine Cellars Artemis 2010 (1 bt)
 12 bottles
\$350-500

1303
 Mixed California Cabernet
 McKenzie Mueller Cabernet Sauvignon 1997 (4 bts)
 Del Bondio Cabernet Sauvignon 2001 (6 bts)
Napa
 10 bottles
\$200-300

1304
 Mixed California (sans Cabernet)
 Arietta
 Hudson Vineyard Merlot 2006 (1 bt)
 On The White Keys 2007 (1 bt)
 Buccella Merlot 2006 (1 bt)
 Chateau Montelena Zinfandel Estate 1994 (2 bts)
 Engel Family Vineyards Merlot 2005 (1 bt)
 Flowers
 Moon Select Pinot Noir 2007 (1 bt)
 Porter Bass Vineyard Chardonnay 2000 (1 bt)
 Talmage Bench Zinfandel 1998 (1 bt)
 Kongsgaard Chardonnay 2006 (2 bts)
 Paloma Merlot 2003 (1 bt)
 12 bottles
\$350-500

1305
 Mixed California
 August Briggs Chardonnay 1999 (1 bt)
 Cambria Chardonnay Katherine's Vineyard 2001 (1 bt)
 Mueller Emily's Cuvee Pinot Noir 1998 (1 bt)
 Peter Michael La Carriere 2001 (1 bt)
 Rodney Strong Estate Pinot Noir 2003 (1 bt) writing on label, torn label
 5 bottles
\$100-150

1306
 Mixed California
 Beringer Bancroft Ranch Howell Mountain Merlot 1997 (2 bts)
 Girard Proprietary Red 1997 (1 bt)
 Groth Merlot 1997 (1 bt)
 Stag's Leap Wine Cellars Petite Sirah 1997 (5 bts)
 Stag's Leap Wines Petite Sirah 1997 (1 bt)
 Duckhorn Merlot 1997 (2 bts)
Napa
 12 bottles
\$350-500

1307
 Mixed California
 Clos du Val Cabernet Sauvignon 1997 (5 bts) two with signs of old seepage
 Franciscan Meritage Magnificat 1997 (7 bts)
 12 bottles
\$600-900

1308
 Mixed California
 De Loach Cabernet Sauvignon 1999 (1 bt)
 Del Bondio Cabernet Sauvignon 2001 (1 bt)
 Liberty School Cabernet Sauvignon 1999 (1 bt)
 Matanzas Creek Merlot 1997 (1 bt)
 Ravenswood Vintners Blend Zinfandel 1999 (1 bt)
 Sequoia Grove Cabernet Sauvignon 2002 (1 bt)
 Shafer
 Firebreak 1997 (2 bts)
 Merlot 1999 (2 bts)
 10 bottles
\$225-375

1309
Mixed California
 Dominus Estate 1990 (1 bt) u: into neck, oxidized capsule, wine-stained label
 Beaulieu Vineyard Georges de Latour 1989 (2 bts) u: bottom neck
 Matanzas Creek Sonoma Valley Merlot
 1990 (1 bt) u: bottom neck
 1992 (2 bts) u: bottom neck
 Duckhorn Vineyards Merlot Napa Valley 1991 (1 bt) u: bottom neck
 7 bottles
\$300-450

1310
Mixed California
 Heitz Cellar Martha's Vineyard Cabernet Sauvignon 1972 (1 bt) u: top shoulder, slight signs of old seepage, lightly torn label, heavily bin-soiled label
 Niebaum Coppola Cask Sample 1980 (1 mag) u: bottom neck
 Sonoma Vineyard River West Zinfandel 1977 (2 bts) u: bottom neck, bin-soiled labels
 Sterling Vineyards Reserve Cabernet Sauvignon 1973 (2 bts) u: bottom neck, bin-soiled labels
Napa
 5 bottles
 1 magnum
\$250-400

1311
Mixed California
 Jordan Alexander Valley 1990 (2 bts) u: into neck
 Silver Oak Alexander Valley 1990 (1 bt) u: into neck
 Peter Michael Les Pavots 1992 (1 bt) u: into neck
 Paloma Merlot 1994 (4 bts) u: into neck
 8 bottles
\$275-375

1312
Mixed California
 Louis Martini Cabernet Sauvignon 1979 (1 bt)
 Firestone Vineyard Cabernet Sauvignon 1982 (1 bt)
 Pine Ridge Cabernet Sauvignon 1985 (1 bt)
 Sterling Vineyards Merlot 1986 (1 bt)
 Beaulieu Vineyard Beautour 1988 (2 bts)
 Saint Clement Cabernet Sauvignon 1993 (1 bt)
 Pine Ridge Cabernet Sauvignon 1995 (1 bt)
 Crimson Creek Merlot 1995 (1 bt)
 Clos du Bois Merlot 1997 (1 bt)
 Perelli Minetti Reserve Cabernet Sauvignon 1998 (1 bt)
 Robert Mondavi Merlot 2001 (1 bt)
California
 12 bottles
\$300-450

1313
Mixed California
 Ojai Syrah Thompson Vineyard 2007 (1 bt)
 Syrah White Hawk Vineyard 2007 (1 bt)
 Trentadue La Storia Petite Sirah 2010 (6 bts)
Sonoma
 8 bottles
\$70-100

1314
Mixed California
 Tay Cabernet Sauvignon 1996 (1 bt)
 Trefethen Cabernet Sauvignon 1996 (2 bts)
 Beaulieu Vineyards Tapestry 1997 (1 bt)
 Beringer Private Reserve Cabernet Sauvignon 2001 (3 bts)
 Silver Oak Alexander Valley 2004 (1 bt)
 Napa Valley 2002 (2 bts)
 10 bottles
\$450-650

1315
Non-Californian American Wines
 Nantucket Vineyard American Zinfandel NV (2 bts)
 Sailors Delight NV (1 bt)
 Zinfandel NV (1 bt)
 Biltmore Cabernet Franc 2000 (3 bts)
 Cabernet Sauvignon 1999 (2 bts)
 Vanderbilt Claret 1999 (2 bts)
 Iron Gate Pack House Red NV (1 bt)
 Oak Knoll Frambosia NV (1 demi)
 Ste. Michelle Merlot 1994 (3 bts)
 1 demi bottle
 15 bottles
\$150-225

Washington

1316
Abeja Cabernet Sauvignon 2005
Columbia Valley
 5 bottles
\$125-200

1317
Quilceda Cabernet Sauvignon 1999
Columbia Valley
 1 bottle
\$100-150

1318
Quilceda Cabernet Sauvignon 2000
Columbia Valley
 1 bottle
\$100-150

1319
Quilceda Washington Cabernet Sauvignon 2004
Columbia Valley
 1 bottle
\$100-150

1320
Quilceda Creek Palengat Red Wine 2007 (2 bts) J. Miller for TWA, 96 pts. 08/10
2008 (1 bt) J. Miller for TWA, 97 pts. 08/11
Washington
 3 bottles
\$325-475

Argentina

1321
Mixed Mendel Unus Malbec 2009 (6 bts) Malbec 2010 (5 bts)
Argentina
 11 bottles
\$150-225

1322
Tikal Amorio Malbec 2009
Argentina
 10 bottles
\$100-175

1323
Mixed Malbec Anoro El Regalo Malbec 2008 (5 bts) Black Tears Tapiz Malbec 2007 (5 bts)
Argentina
 10 bottles
\$225-350

1324
 Mixed Argentina
 Aduentus Mediterraneo 2006 (4 bts)
 Andeluna Limited Reserve Malbec
 2004 (3 bts)
 Catena Zapata
 Catena Alta Cabernet Sauvignon
 2001 (1 bt)
 Nicolas 2007 (1 bt) J. Miller for TWA,
 98 pts. 12/10
 La Posta Pizzella Family Vineyard
 Malbec 2008 (2 bts)
 11 bottles
\$250-400

Mixed Lots

1325
 Around the World
 Boutinot Old Fart Grenache Syrah,
 Cotes de Ventoux 2000 (1 bt)
 Les Caves de la Colombe Volnay
 2002 (1 bt)
 Navarro Correas Malbec Coleccion
 Privada 2008 (1 bt)
 Caliterra Arboleda Cabernet
 Sauvignon 1998 (1 bt)
 Gedeon Petit Syrah 2006 (1 bt)
 Cathedral Cellars Shiraz South
 Africa 1996 (1 bt)
 Bodegas Borsao Campo de Borja
 2000 (1 bt)
 Bodegas Nekeas Vega Sindoa
 Cabernet Tempranillo 1998 (2 bts)
 Bodegas Nekeas Vega Sindoa
 Merlot 1998 (1 bt)
 Marques de Caceres Rioja 1997 (1
 bt)
 11 bottles
\$150-225

1326
 Mixed French Wines
 Chateau Pesquie 1999 (2 bts)
 Jerome Bressy Domaine Gourt de
 Mautens
 1999 (5 bts)
 Domaine St. Benoit Chateaufeuf du
 Pape La Truffiere 1998 (3 bts)
 Domaine Yves Cuilleron Condrieu
 Vertige 2001 (1 bt)
 Tardieu Laurent Vacqueyras Vieilles
 Vignes 1997 (7 bts)
 18 bottles
\$325-450

1327
 Dinner Lot
 Leroy Pommard Les Vignots 1987 (1
 bt) u: 2.0cm, lightly bin-soiled label
 Groth Cabernet Sauvignon 1996 (1
 bt)
 Jordan Alexander Valley 1991 (1 bt)
 u: bottom neck
 Croft Vintage Port 1994 (1 bt)
 4 bottles
\$150-225

1328
 Dinner Lot
 Kistler Dutton Ranch Chardonnay
 2011 (1 bt)
 Brewer Clifton Zotovich Pinot Noir
 2006 (1 bt)
 Elyse Tietjen Cabernet Sauvignon
 2006 (1 bt)
 Dr. Von Basserman-Jordan
 Deidesheimer Leinhohle Riesling
 2002 (1 demi)
 1 demi bottle
 3 bottles
\$225-350

1329
 Mixed Red Wine
 Clos Mont Olivet Chateaufeuf du
 Pape 2001 (1 bt)
 E. Guigal Chateaufeuf du Pape 1990
 (1 bt) u: 2.5cm, lightly bin-soiled
 label
 Rene & Louis Lequin Santenay 1er
 Cru La Comme 1989 (2 bts) u: 1.5cm
 Silver Oak
 Alexander Valley 1992 (1 bt) u: into
 neck
 Napa Valley 1992 (1 bt) u: into neck
 6 bottles
\$200-300

1330
 Mixed Wine
 Alemany i Corrio Sot Lefriec 1999
 (5 bts)
 Clerico Tre Vigne 1998 (6 bts)
 Luce Proprietary Red 1997 (1 bt)
 12 bottles
\$250-400

1331
 Mixed Wine
 Domaine Caton Cabernet Sauvignon
 1993 (1 bt)
 Cabrieres Chateaufeuf du Pape
 1990 (1 bt)
 Castello d'Albola Chianti Classico
 2002 (1 bt)
 Concha Y Toro Don Melchor 2001
 (1 bt)
 Hill Smith Estate Reserve Shiraz
 1980 (1 bt)
 Lindeman's Bin 45 Cabernet
 Sauvignon 1994 (1 bt)
 Pere Anselme La Fiole du Pape
 CNDP NV (1 bt)
 Perrin Sinards CNDP 2002 (1 bt)
 Ste Michelle River Ridge Cabernet
 Sauvignon 1988 (1 bt)
 Taurino Rosso Salice Salentino 1988
 (1 bt)
 10 bottles
\$200-300

1332
 Mixed Wines
 Betz La Serenne Syrah 2006 (2 bts)
 Allegrini Amarone Classico Recioto
 Della Valpolicella 1971 (1 bt) u:
 5.0cm, nicked and lightly bin-soiled
 label
 Ruffino Riserva Ducale 1971 (1 bt)
 u: top shoulder, oxidized capsule,
 faded label
 Conundrum Proprietary White 2002
 (3 bts)
 7 bottles
\$150-225

1333
 R. Cheillon NSG Les Vaucrains
 1993 (1 bt)
 Pavillon Rouge du Ch. Margaux
 1988 (1 bt)
 Allegrini Palazzo Della Torre 1997
 (2 bts)
 Masi Amarone 1993 (1 bt)
 Fattoria La Leccaia Brunello 1997
 (1 bt)
\$225-325

1334
 Mixed Red Wine
 Lindemans Limestone Coast
 Cabernet Sauvignon 1985 (3 bts)
 u: two very top shoulder, one top
 shoulder
 Forman Merlot 1994 (1 bt) u: into
 neck
 Castello di Poppiano Chianti 1997
 (2 bts)
 Alejandro Fernandez Pesquera
 Reserva 1982 (1 bt) u: very top
 shoulder, lightly corroded capsule,
 signs of old seepage, bin-soiled
 label
 Domaine Matrot Volnay Santenots
 1988 (2 bts) u: 1.5cm, heavily bin-
 soiled labels
 9 bottles
\$150-225

1335
 Pine Ridge Merlot Selected Cuvee
 1985 (1 bt) u: bottom neck
 Pope Valley Pope Valley 1972 (1 bt)
 u: top shoulder, handwritten label
 reads "100 year old vines, 15 gallons
 made, minty flavor, spicy nose,
 moderately woody"
 Raymond Vineyard
 Chardonnay 1980 (1 bt) u: 2.0cm
 Vintage Select Red 1982 (1 bt) u:
 bottom neck
 Rodney Strong Russian River Valley
 1978 (1 bt)
 Sokol Blosser Yamhill County Pinot
 Noir
 1979 (1 bt) u: 2.5cm
 1986 (1 bt)
 St. Amant 1985 (1 bt) u: into neck
 Tablas Creek Vineyard Roussanne
 2002 (1 bt)
 9 bottles
\$150-250

1336

Mixed Wine

Elderton Command Shiraz 1994 (2
bts)

Beaulieu Georges de Latour 1986
(2 bts)

Stonestreet Cabernet Sauvignon
Alexander Valley 1992 (1 bt)

5 bottles

\$225-300

1337

Mixed Dessert Wines

Quady California Orange Muscat
2000 (1 demi)

Bonny Doon Framboise NV (1 demi)
Ralph Fowler Botrytis Semillon 1999
(5 demis)

RL Buller & Sons Premium Fine
Muscat Solera (21 demis) two with
signs of old seepage

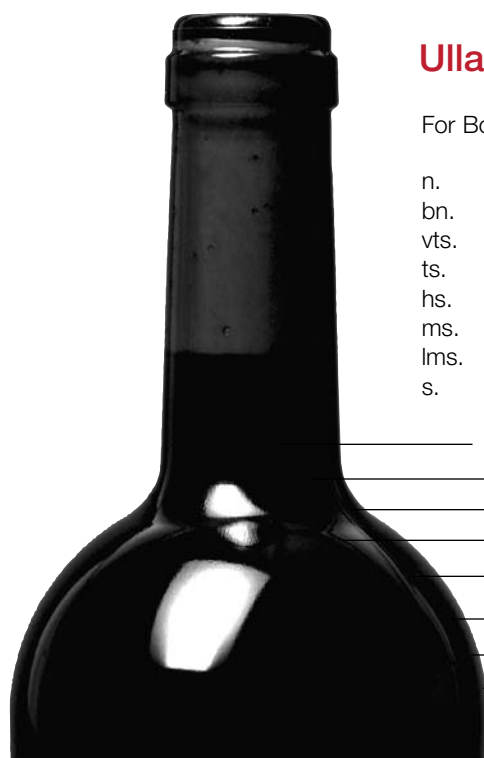
Yalumba Antique Tawny NV (1 demi)
29 demi bottles

\$175-275

End of Sale 2784T

Ullage (Level of Wine) Illustration and Interpretations

For Bordeaux, Port, and other shouldered bottles



- n. ullage is into neck
- bn. bottom neck
- vt. very top shoulder
- ts. top shoulder; usual level for Bordeaux older than 15 yrs
- hs. high shoulder; usual cork reduction, often found in Bordeaux over 20 yrs, low risk
- ms. mid shoulder; variation likely as indicates cork deterioration
- lms. low mid shoulder; some risks, reflected in estimates
- s. shoulder; risky, reflected in estimates

- into neck
- bottom neck
- very top shoulder
- top shoulder
- high shoulder
- mid shoulder
- low mid shoulder
- shoulder

Ullage of wines of vintages fifteen years and younger may be assumed to be of bottom neck or better unless otherwise noted. Similarly, regarding older vintages, lack of notation indicates acceptable and appropriate ullage, clear label and sound cork; **potential bidders must be prepared for reasonable variations in ullage in all vintages older than 20 years.** Bidders with specific condition questions should contact the Fine Wines department. Conditions generally not noted on group lots.

Bordeaux wines are cataloged referencing the 1855 classification. Chateau Petrus cataloging reflects the practice of granting it 1er Cru Classe and other notable Pomerol Chateaux are designated Cru Classe. All Bordeaux wines may assume to be chateau bottled unless otherwise stated.

It is standard practice for Skinner/Lower Falls Wine to open all original wooden cases (owc) for visual inspection. The opening of banded cases will be determined on an individual basis.

For Burgundy, German wines and all other more gradually slope-shouldered bottles, the ullage measurement is taken in centimeters from cork base, e.g. 3cm, 5cm, 7cm.

Bottle Sizes

bottle (750 ml)	jeroboam (4xbt); Burgundy, Champagne	demi bottle (demi)
magnum (2xbt)	jeroboam (6xbt); Bordeaux	split (1/4 bottle) Champagne
marie jeanne (3xbt)	imperiale (8xbt); Bordeaux	
double magnum (4xbt)	methuselah (8xbt); Burgundy	

Buyers' Caution: Levels are as when catalogued; ullage may change due to cork deterioration; other bottle conditions may occur during storage and shipment. Risk of ullage variation and cork deterioration and/or failure is assumed by the buyer at time of sale and no sale cancellations, price negotiations, or bottle substitutions will be undertaken by either Skinner or Lower Falls Wine. Similarly, no substitutions will be made due to inaccurate descriptions.

Flights of Lots: Are of the same type, vintage and bottle count and follow one after another numerically, though ullage and bottle conditions may vary. The auctioneer may exercise discretion to offer, in consecutive lot order and at that same price, the following lots in the flight to the first successful bidder of that flight. Subsequently, those lots not purchased will be offered anew and so on. Absentee bids placed on any lot in a flight will be applied to the next lot in the flight (if unsuccessful), until the flight concludes.

Environmental Note: It has only been in the last 15-20 years that the wine industry has moved away from using lead capsules to cover the cork and neck of a bottle. When opening an older wine, if you do have a lead capsule, give consideration as to how you dispose of it.

Collection of Goods

Your Wines

Lower Falls Wine Co. will endeavor to release or transport your wine to you as quickly as possible. The inherent nature of fine wine—particularly aged bottles—requires that due care be taken in its storage and transport. We request your partnership in making sure no harm arises during storage, collection or transportation. We may offer suggestions as to the best course of action to safeguard your purchase. Fees charged are only to recover associated costs and are not intended to create a profit center from the act of getting your wines to you.

Pick-up of Wines

Collection is available by prior arrangement only at:

Lower Falls Wine Co.

2366 Washington Street (Rt. 16)

Newton Lower Falls, MA 02462

Please schedule your pick-up by contacting Lower Falls Wine Co., 617.332.3000, jgainey@lowerfallswine.com, or www.lowerfallswine.com, a minimum of seventy-two hours in advance. Full payment of all applicable charges must be received prior to the release of any goods. Wines will only be released to those over 21 years of age. Proof of age will be required.

Issues with Regard to Transportation

All bidders should make themselves aware of the limitations and restrictions imposed by various states with regard to the importation of alcoholic beverages which have been purchased at auction and transported into any states jurisdiction. All buyers have the sole responsibility to research, understand and comply with all permit or license requirements before collection or transport of purchases occurs. Neither Skinner Inc. nor Lower Falls Wine Co. is responsible for obtaining any permits or licenses on behalf of any bidder. Lower Falls Wine will facilitate, where able, in the making of arrangements for the buyer on their behalf. Bidders are strongly urged to understand the individual state statutes with regard to importation prior to participation in any auction to insure compliance with said statutes.

Local Delivery

Lower Falls Wine Co. will deliver within Metro west Boston at no charge. We will deliver for a fee inside Route 495.

- One case, \$29
- Two to four cases, \$19 per case
- Five or more cases, \$14 per case

Buyers arranging Massachusetts delivery outside of Route 495 should inquire as to the fees for delivery. Deliveries are made Monday through Friday during normal business hours. Delivery will usually occur within one week of your request. All fees associated with delivery must be paid in advance of delivery. We reserve the right to (re)package wines if deemed necessary for a nominal fee. Wines will only be delivered to, and must be signed for by, someone over 21 years of age.

Third-Party Delivery

For third-party shipments, Skinner and Lower Falls Wine Co. advise you to consider:

- Manhattan Wine Company, www.mwcwine.com, 973.574.8701
a NYC Metro wine transportation and storage service provider with a network of national contacts
- Western Carriers, www.westerncarriers.com, 800.631.7776
a national provider of fine wine storage and temperature-controlled transportation services.
- River Valley Wine Cellars, www.rivervalleywinecellars.com, 914.345.8700

Splits

Any lot that is split for either pick-up or delivery will be subject to a nominal charge.

Storage

Complimentary storage of any purchases will not exceed forty-five days past the auction date. All uncollected lots will be charged \$100 per month (or fraction thereof). Purchases in excess of ten lots will be subject to a fee of a minimum of \$250 per month. Lower Falls Wine Co. will not be liable for wines fourteen (14) days after auction date.

All inquires with regard to collection or delivery should be addressed to Lower Falls Wine Co. at 617.332.3000

Skinner, Inc. & Lower Falls Wine Co.

Conditions of Sale – Fine Wines/Fine Wines – Online Auction

1. All bidders and buyers of wine must be at least 21 years of age and shall present satisfying legal documentation of this at auction. In the event the buyer is a partnership or corporate entity, the receiver of the wine shall furnish proof fulfilling this criteria.
 2. Some of the lots in this sale are offered subject to a reserve. The reserve is a confidential minimum price agreed upon by the consignor and Skinner, Inc., below which the lot will not be sold. In most cases, the reserve will be set below the estimated range, but in no case will it exceed the estimates listed. A representative of Skinner, Inc. will execute such reserves by bidding for the consignor. In any event, and whether or not a lot is subject to a reserve, Skinner, Inc. and Lower Falls Wine Co. may reject any bid or raise not commensurate with the value of such lot.
 3. All property is sold "as is," and neither Skinner, Inc. and Lower Falls Wine Co. nor any consignor makes any warranties or representation or any kind or nature with respect to the property, and in no event shall they be responsible for the correctness, nor deemed to have made any representation or warranty, or description, genuineness, authorship, attribution, provenance, period, culture, source, origin, or condition of the property and no statement made at the sale, or in the bill of sale, or invoice, or in the catalog, or elsewhere shall be deemed such a warranty of representation or an assumption of liability. Prospective buyers are urged to inspect those lots they have interest in.
 4. Except as provided in paragraph 1 above, the highest bidder as determined by Skinner, Inc. shall be the purchaser. In the case of a disputed bid, the auctioneer shall have sole discretion in determining the purchaser and may also, at his or her election, withdraw the lot or reoffer the lot for sale. The auctioneer shall have sole discretion to refuse any bid, or refuse to acknowledge any bidder. Please note Massachusetts state law requires all purchasers of alcoholic beverages be at least 21 years of age. Any bidder that plans on spending in excess of \$100,000 should make arrangements with the accounting department at least five (5) days in advance of the sale, as a deposit may be required to participate.
 5. All merchandise purchased is payable directly to Skinner Inc., and must be paid for the day of the auction. All merchandise must be removed from Lower Falls Wine Co. within forty five (45) days of the auction, and in no event shall Skinner Inc. or Lower Falls Wine Co. have any liability for any damage to property left on its premises for more than fourteen (14) days after the sale. Lower Falls Wine Co. may impose, and the purchaser agrees to pay, a monthly storage fee per lot as determined by Lower Falls Wine Co. (see Collection of Wines). If any property has not been removed within forty five (45) days from the date of sale, at the option of Skinner, Inc. and Lower Falls Wine Co. (a) the merchandise may be transferred to and stored at a bonded warehouse and the purchaser agrees to pay all transfer and storage expenses, and/or (b) Skinner Inc. and Lower Falls Wine Co. may place the merchandise in a subsequent auction, without Reserve, to be sold to the highest bidder, and after deducting the standard commission and any additional charges that may apply, remit the proceeds to the purchaser.
 6. Acceptable forms of payment are cash, good check, or wire transfers, payable in U.S. dollars. Checks will be acceptable only if credit has been established with Skinner or if a bank authorization has been received guaranteeing the check. Skinner, Inc. and Lower Falls Wine Co. reserve the right to hold merchandise purchased until the funds have cleared the bank. The purchaser agrees to pay Skinner and/or Lower Falls Wine Co. a handling charge of \$25.00 for any check dishonored by the drawee.
 7. If the purchaser breaches any of its obligations under these Conditions of Sale, including its obligation to pay in full the purchase price of all items for which it was the highest successful bidder, Skinner Inc. and Lower Falls Wine Co. may exercise all of its rights and remedies under the law including, without limitation, (a) canceling the sale and applying any payments made by the purchaser to the damages caused by the purchaser's breach, and/or (b) offering at public auction, without reserve, any lot or item for which the purchaser has breached any of its obligations, including its obligation to pay in full the purchase price, holding the purchaser liable for any deficiency plus all costs of sale.
 8. In no event will the liability of Skinner, Inc. and Lower Falls Wine Co. to any purchaser with respect to any item exceed the purchase price actually paid by such purchaser for such item.
 9. Lower Falls Wine Co. may, in their discretion and at purchaser's request, package and arrange for delivery as directed by the purchaser. In such event, purchaser agrees that (a) all such packaging, handling and delivery is at the sole risk of the purchaser and that Skinner, Inc. and Lower Falls Wine Co. shall have no liability for any loss or damage to such items, and (b) purchaser shall pay in advance, all packaging expenses, including labor, materials, carriers fees and all insurance charges. Please arrange seventy-two (72) hours in advance for collection and delivery.
- Purchaser shall make itself aware of the limitations and restrictions imposed by various states in regards to the transportation and importation of alcoholic beverages and purchaser has the sole responsibility to research and comply with all permit and licensing requirements. Neither Skinner, Inc. nor Lower Falls Wine Co. shall be responsible for obtaining any permits or licenses on behalf of purchaser and no sale shall be cancelled or refunded for lack of purchaser's noncompliance with permitting and licensing issues. (Please see Collection of Wines)
10. A premium equal to 23% of the final bid price up to and including \$100,000, plus 20% of the final bid price from \$100,001 up to and including \$1,000,000, plus 12% of the final bid price from \$1,000,001 and over will be applied to each lot sold, to be paid by the buyer as part of the purchase price.
 11. Bidding on any item indicates your acceptance of these terms and all other terms printed within, posted, and announced at the time of sale whether bidding in person, through a representative, by phone, by Internet, or other absentee bid.
 12. Skinner, Inc. and its consignors make no warranty or representation, express or implied, that the purchaser will acquire any copyright or reproduction rights to any lot sold. Skinner, Inc. expressly reserves the right to reproduce any image of the lots sold in this catalog. The copyright in all images, illustrations and written material produced by or for Skinner, Inc. relating to a lot, including the contents of this catalog, is, and shall remain at all times, the property of Skinner, Inc. and shall not be used by the purchaser, nor by anyone else, without our prior written consent.
 13. These conditions of sale shall be governed by the laws of the Commonwealth of Massachusetts (excluding the laws applicable to conflicts or choice of law). The buyer/bidder agrees that any suit for the enforcement of this agreement may be brought, and any action against Skinner in connection with the transactions contemplated by this agreement shall be brought, in the courts of the Commonwealth of Massachusetts or any federal court sitting therein. The bidder/buyer consents to the exclusive jurisdiction of such courts and waives objections that it may now or hereafter have to the venue of any such suit.

Board of Directors

Chairman of the Board

Stephen L. Fletcher

Richard Albright

John Deighton

Karen M. Keane

Andrew Payne

Nancy R. Skinner, Chairman Emerita

Executive Management

President/Chief Executive Officer

Karen M. Keane

Chief Financial Officer

Don Kelly

Executive Vice President

Stephen L. Fletcher

Managing Director

Marie Keep

Senior Vice Presidents

Marie Keep

Kerry Shrives

Stuart G. Slavid

Vice Presidents

Victoria Bratberg

Eric Jones

Gloria Lieberman

Carol McCaffrey

Robin S.R. Starr

L. Emerson Tuttle

Regional Directors

Western Massachusetts:

George Thomas Lewis

413.727.2721

glewis@skinnerinc.com

Florida: April L. Matteini, G.G.

508.970.3138

florida@skinnerinc.com

Maine: Bruce Buxton

Departments

20th Century Design

Jane D. Prentiss

20thcentury@skinnerinc.com

508.970.3253

American & European Paintings & Prints

Robin S.R. Starr

Elizabeth C. Haff

Michelle Lamunière

paintings@skinnerinc.com

508.970.3206

American Furniture & Decorative Arts

Stephen L. Fletcher

Chris Barber

Christopher D. Fox

americana@skinnerinc.com

508.970.3200

American Indian & Ethnographic Art

Douglas Deihl

indian@skinnerinc.com

508.970.3254

Antique Motor Vehicles

Jane D. Prentiss

antiquemotorvehicles@skinnerinc.com

508.970.3253

Asian Works of Art

Judith Dowling

Helen Eagles

Suhyung Kim

asian@skinnerinc.com

508.970.3263

Books & Manuscripts

Devon Eastland

books@skinnerinc.com

508.970.3293

Ceramics

Stuart G. Slavid

ceramics@skinnerinc.com

508.970.3203

Clocks, Watches & Scientific Instruments

Robert C. Cheney

Jonathan Dowling

Paul Dumanowski

clocks@skinnerinc.com

508.970.3201

Discovery Auctions

Kyle Johnson

Melanie Trottier-Mitcheson

discovery@skinnerinc.com

508.970.3202

European Furniture & Decorative Arts

Stuart G. Slavid

Stephanie Opolski

Gwendolyn L. Smith

european@skinnerinc.com

508.970.3203

Historic Arms & Militaria

Joel Bohy

militaria@skinnerinc.com

508.970.3215

Jewelry

Victoria Bratberg

John Colasacco

jewelry@skinnerinc.com

508.874.4313

Judaica

Kerry Shrives

judaica@skinnerinc.com

508.970.3256

Musical Instruments

Jill Arbetter

music@skinnerinc.com

508.970.3216

Oriental Rugs & Carpets

Lawrence Kearney

Erika Jorjorian

rugs@skinnerinc.com

508.970.3247

Photographs

Michelle Lamunière

photographs@skinnerinc.com

508.970.3264

Silver

Stuart G. Slavid

silver@skinnerinc.com

508.970.3203

Wine, Whisky & Ale

Marie Keep

Joseph Hyman

Michael J. Moser

finewines@skinnerinc.com

508.970.3296

Auction Services

Consignments

Appraisal & Auction Services

LaGina Austin

Christine E. Finn
Rachel Kingsley
Elizabeth Zwicker
508.970.3299

Institutional Relations

L. Emerson Tuttle

Consignment Services

Patricia Walker King

Kealyn Garner
Carol Zeigler
508.970.3204

Customer Relations/Human Resources

Carol McCaffrey

508.970.3252

Accounting

Denise Johnson

508.970.3269

William Madden

508.970.3266

Kevin Rota

508.970.3283

Marketing, Media & Communications

Marketing

L. Emerson Tuttle

Jenna DeLuca
Linsey MacDougall

Subscriptions

Linsey MacDougall

508.970.3240

Advertising/Production

Pamela Van de Houten

Jeffrey R. Antkowiak
Stanley P. Bystrowski
John Cornelius
Kristina Harrison
Kathleen Jones
Cheryl Richards Photography

Skinner Online

Kerry Shrives

Daniel Bar
Judie Ochsner
online@skinnerinc.com
508.970.3279

Absentee & Telephone Bidding

Boston: 617.874.4318

Marlborough: 508.970.3211

Discovery: 508.970.3208

Exhibitions & Property

Boston:

Laura V. Sweeney

Benjamin Evans
Olga Gerasymiv
Paige Lewellyn
Jessica R. Lincoln

Receptionist

Jacqueline Gray

617.350.5400

Marlborough:

Warehouse

Frederic Trottier

508.970.3209
Samatha Heighton

Receptionist

Katie Fitzgerald

508.970.3000

Transportation

Eric Jones

508.970.3229

Auctioneers

Chris Barber, John Colasacco,
Stephen L. Fletcher, Karen M. Keane,
Marie Keep, Jessica R. Lincoln, Kerry Shrives,
Stuart G. Slavid, Robin S.R. Starr,
Laura V. Sweeney

SKINNER

63 Park Plaza
Boston, MA 02116
617.350.5400
Fax 617.350.5429

274 Cedar Hill Street
Marlborough, MA 01752
508.970.3000
Fax 508.970.3100

130 Miracle Mile, Suite 220
Coral Gables, FL 33134
305.503.4423
Fax 305.709.2143

www.skinnerinc.com

Catalog Subscription Form

Prices effective January 17, 2014. Catalog subscription price includes quarterly brochure.

Subscription effective one year from date processed. No refunds for previous subscriptions. Renewal notice will be sent one month prior to expiration.

Subscriptions do not include Discovery, Estates, and other special sales. Post-auction prices are available online at www.skinnerinc.com

Please check the appropriate boxes:

U.S./Canada

Foreign (payable in U.S. dollars only)

<input type="checkbox"/> Quarterly Brochure (Included with catalog subscription)	No charge	No charge
<input type="checkbox"/> American Furniture & Decorative Arts	\$120	\$143
<input type="checkbox"/> European Furniture & Decorative Arts	\$120	\$143
<input type="checkbox"/> American & European Paintings & Prints (two books)	\$135	\$158
<input type="checkbox"/> American & European Fine Prints & Photographs	\$60	\$73
<input type="checkbox"/> American & European Fine Paintings & Sculpture	\$110	\$133
<input type="checkbox"/> Fine Jewelry	\$120	\$143
<input type="checkbox"/> 20th Century Design	\$60	\$73
<input type="checkbox"/> Asian Works of Art	\$60	\$73
<input type="checkbox"/> Fine Oriental Rugs & Carpets	\$18	\$25
<input type="checkbox"/> American Indian & Ethnographic Art	\$60	\$73
<input type="checkbox"/> Fine Books & Manuscripts	\$30	\$36
<input type="checkbox"/> Historic Arms & Militaria	\$60	\$73
<input type="checkbox"/> Fine Musical Instruments	\$60	\$73
<input type="checkbox"/> Clocks, Watches & Scientific Instruments	\$60	\$73
<input type="checkbox"/> Fine Wines	\$60	\$73
<input type="checkbox"/> All Above Departments	\$750	\$915

Subtotal _____

MA residents 6.25% sales tax _____

Total _____

MasterCard/VISA # _____ Exp. Date _____

Signature _____ Check enclosed

Name _____ Business Name _____

Mailing Address _____

City _____ State _____ Zip _____

email address _____ Tel: () _____

Please enclose payment with subscription form and mail or fax to:

Skinner, Inc., Subscription Department, 274 Cedar Hill Street, Marlborough, MA 01752 508.970.3100



2011



Guidalberto

TOSCANA
INDICAZIONE GEOGRAFICA TIPICA
IMBOTTIGLIATO DA
TENUTA SAN GUIDO
CASTAGNETO CARDUCCI - ITALIA



KORRAND

KORRAND CORPORATION, NEW YORK, N.Y. - SOLE U.S. IMPORTER

2011



Guidalberto

TOSCANA
INDICAZIONE GEOGRAFICA TIPICA
IMBOTTIGLIATO DA
TENUTA SAN GUIDO
CASTAGNETO CARDUCCI - ITALIA



KORRAND

KORRAND CORPORATION, NEW YORK, N.Y. - SOLE U.S. IMPORTER

2011



Guidalberto

TOSCANA
INDICAZIONE GEOGRAFICA TIPICA
IMBOTTIGLIATO DA
TENUTA SAN GUIDO
CASTAGNETO CARDUCCI - ITALIA



KORRAND

KORRAND CORPORATION, NEW YORK, N.Y. - SOLE U.S. IMPORTER



Guidalberto

TOSCANA
INDICAZIONE GEOGRAFICA TIPICA
IMBOTTIGLIATO DA
TENUTA SAN GUIDO
CASTAGNETO CARDUCCI - ITALIA

KORRAND

KORRAND CORPORATION, NEW YORK, N.Y. - SOLE U.S. IMPORTER



SKINNER